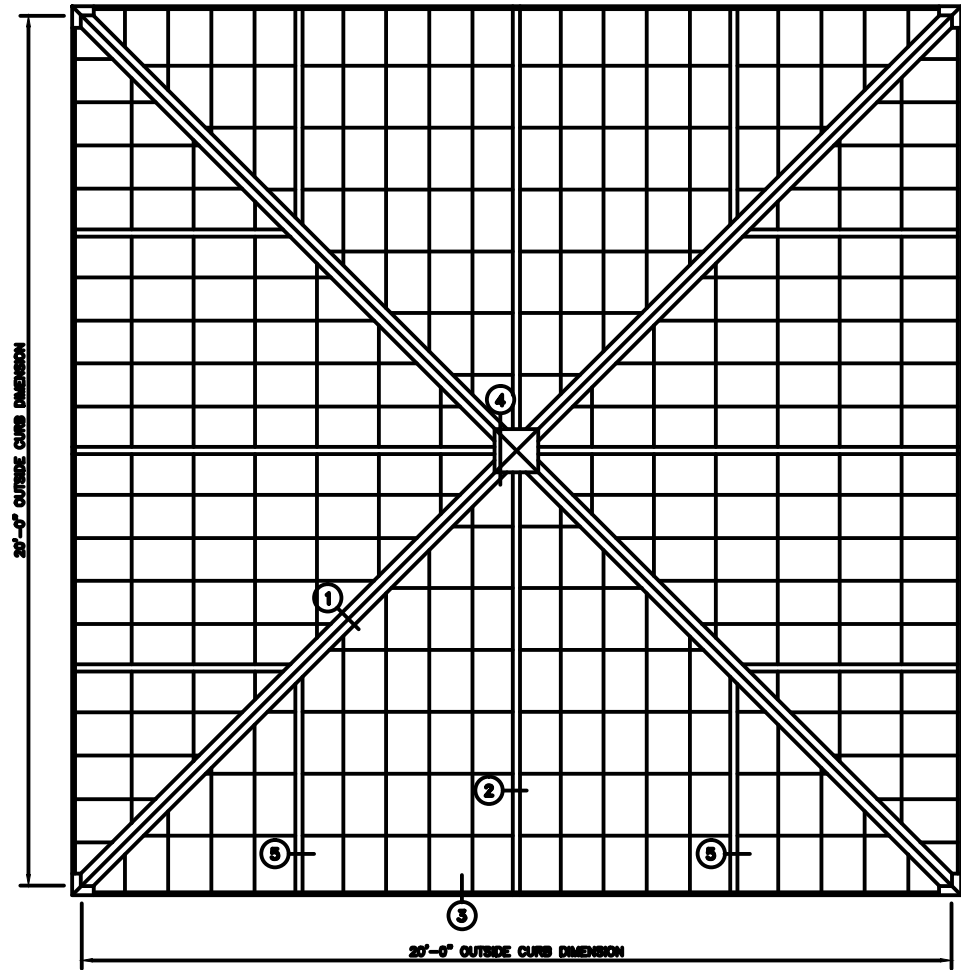


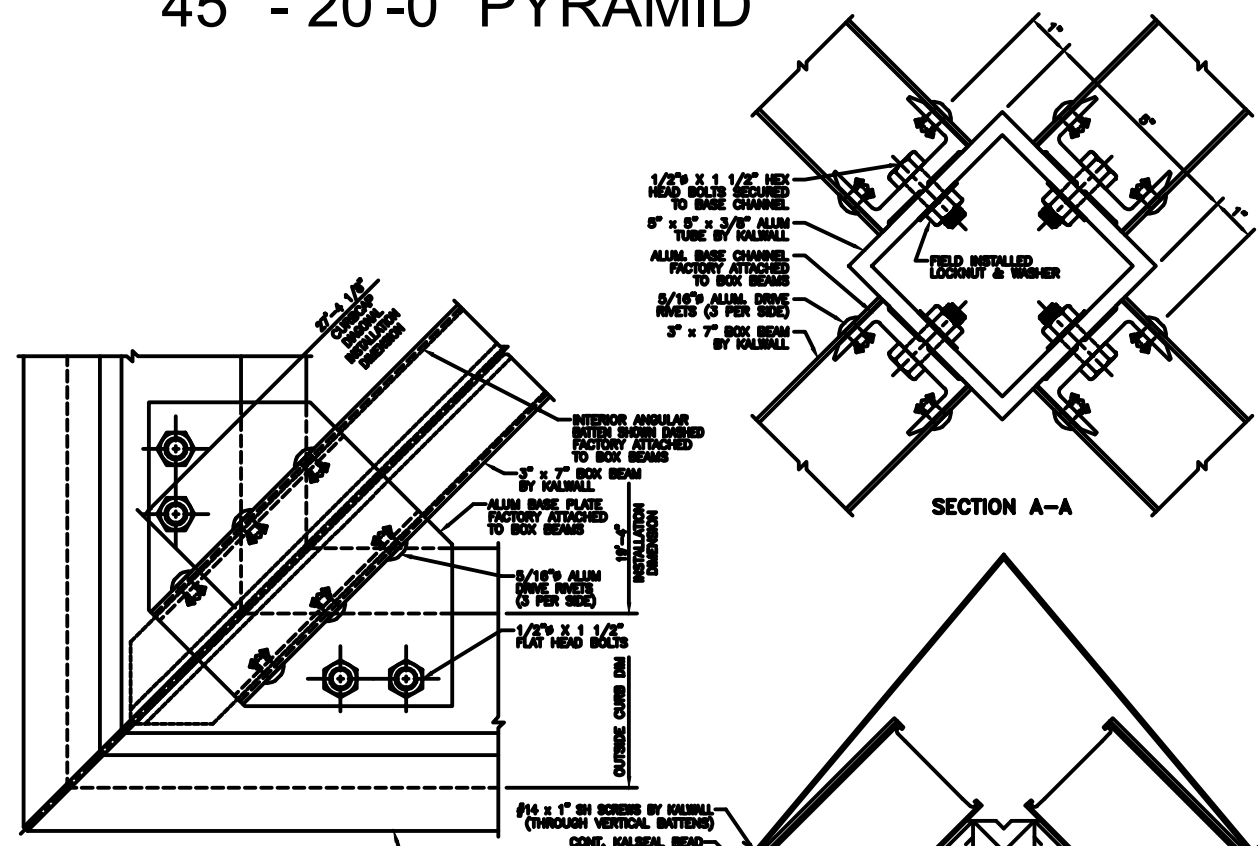
45° - 20'-0" PYRAMID



PYRAMID PLAN

NOTE: SHIPPED IN 8 UNITS

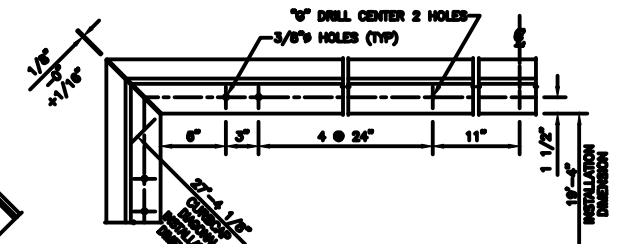
45° SLOPE
45° SLOPE



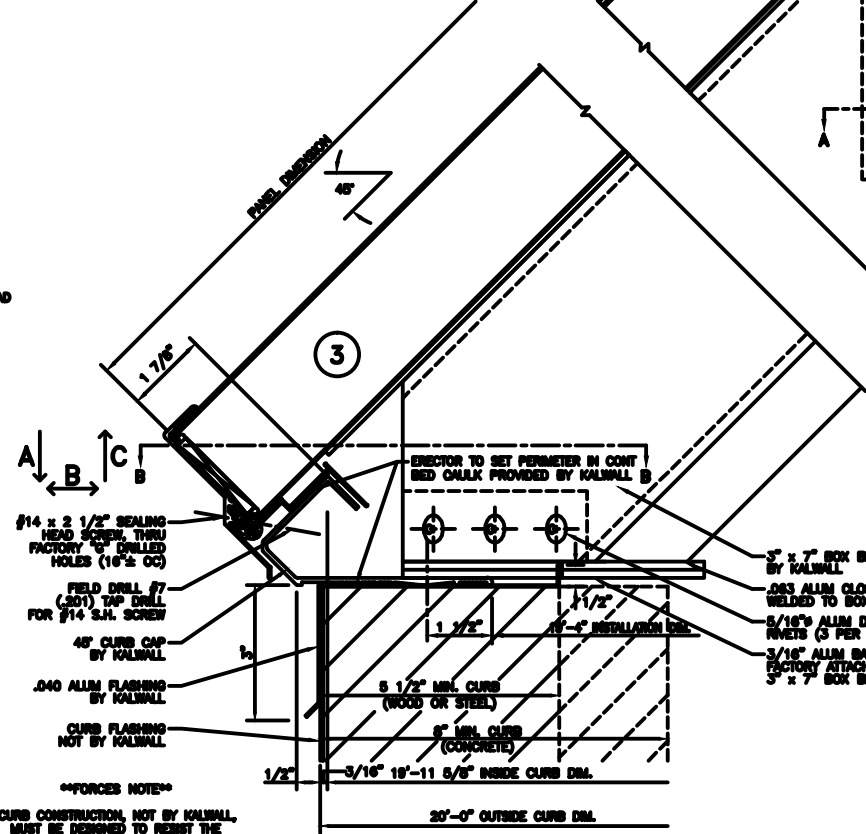
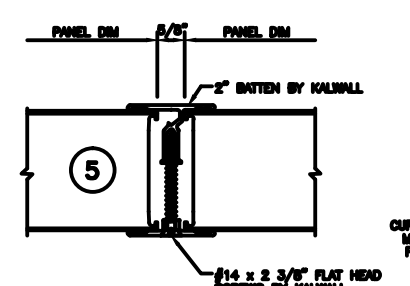
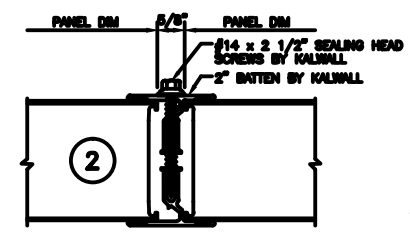
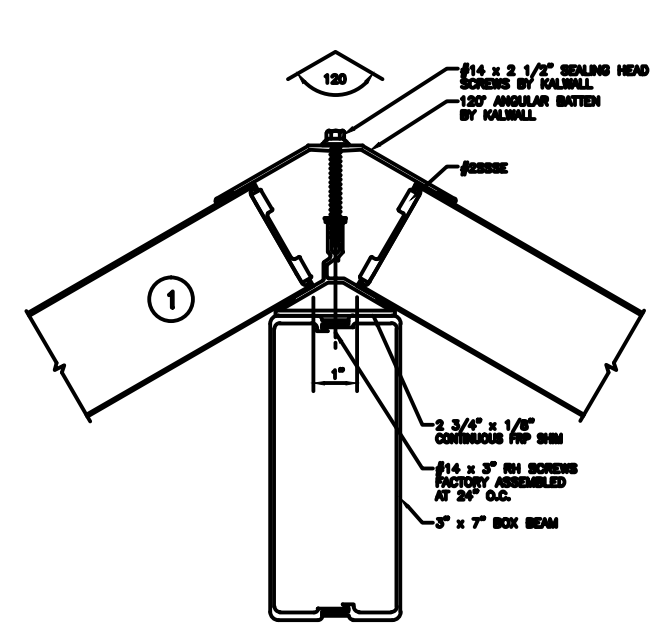
SECTION A-A



SECTION B-B



CURB CAP PLAN



****FORCED NOTE****
CURB CONSTRUCTION, NOT BY KALWALL, MUST BE DESIGNED TO RESIST THE FOLLOWING FORCES PRODUCED BY
A: PEF LIVE LOAD
A: PEF WIND LOAD
A: PEF SNOW LOAD
A: PEF DRIFT LOAD

A: _____ LBS/SIDE
B: _____ LBS/SIDE
C: _____ LBS/SIDE

| CURB TYPE | FASTERER & | SPACING |
|-----------|-----------------------------------|----------|
| WOOD | #14 R.H. S.S. - 4" L.G. | 24" O.C. |
| STEEL | #14 R.H. S.S. - 1" L.G. | 24" O.C. |
| CONCRETE | 1/4" x 3 1/4" POWER STUD ON #7001 | 24" O.C. |

NOT SUPPLIED BY KALWALL UNLESS INSTALLED BY KALWALL
ALL FASTENERS TO BE IN HOLE 1/8" LARGER THAN FASTENER DIA.
HOLE AT CENTER OF CURB TO BE SAME DIA. AS FASTENER

KALWALL[®]
high performance translucent building systems