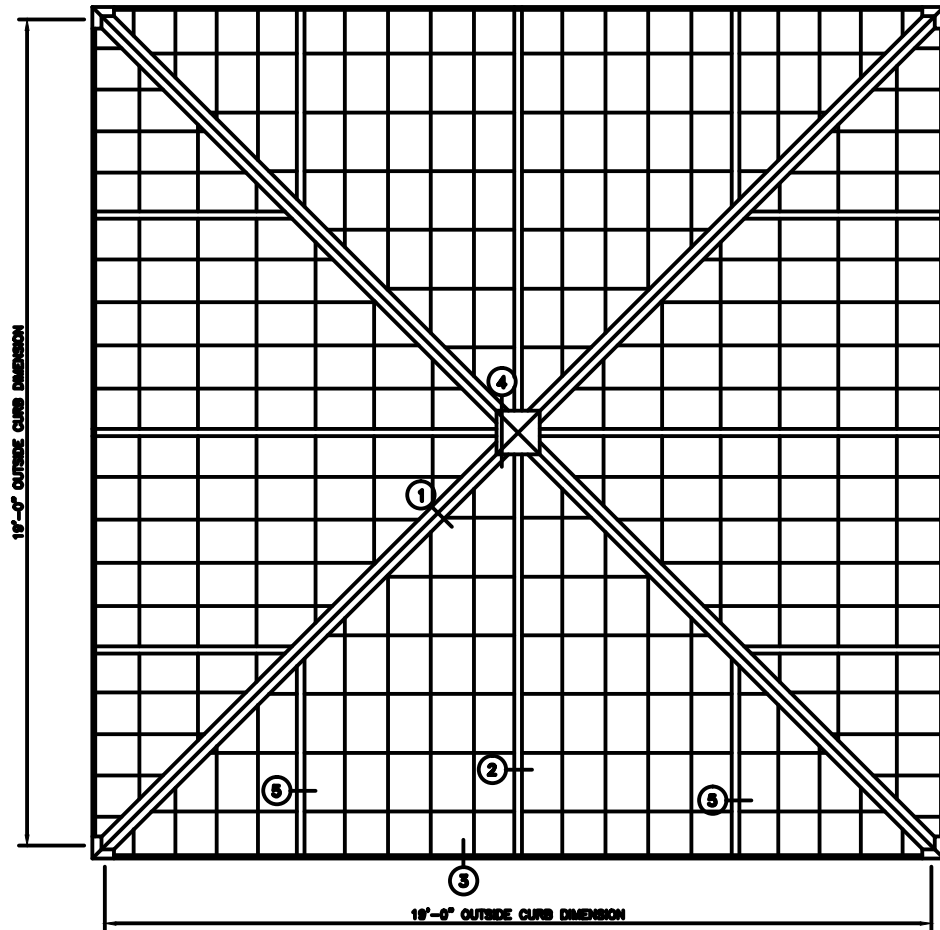
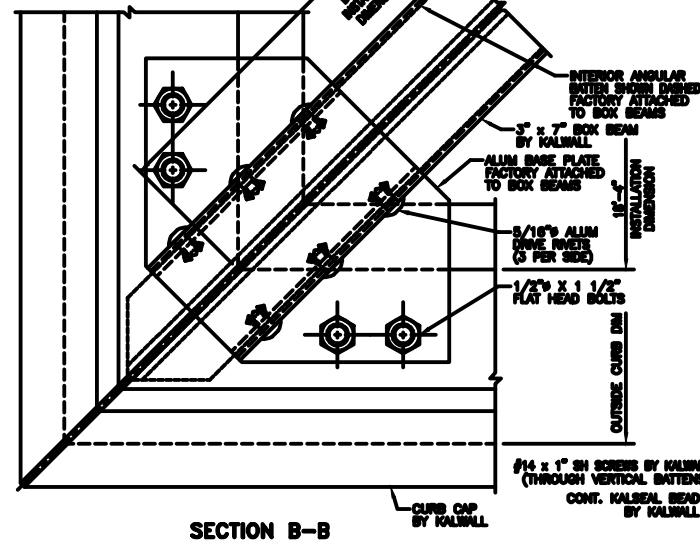


# 45° - 19'-0" PYRAMID

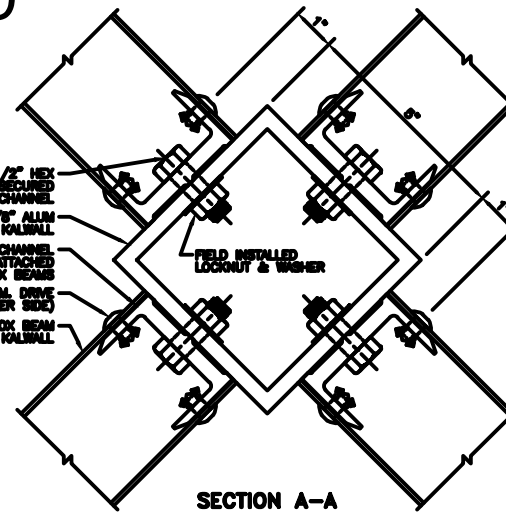


**PYRAMID PLAN**  
NOTE: SHIPPED IN 8 UNITS

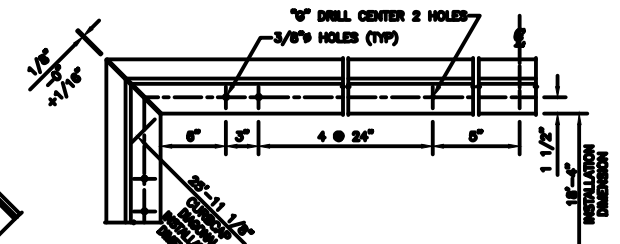
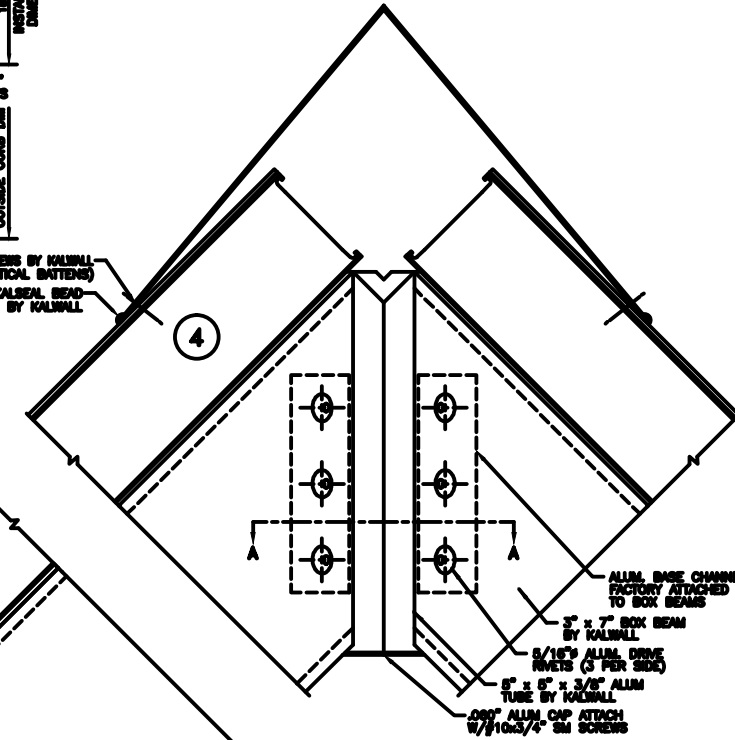
45° SLOPE  
45° SLOPE



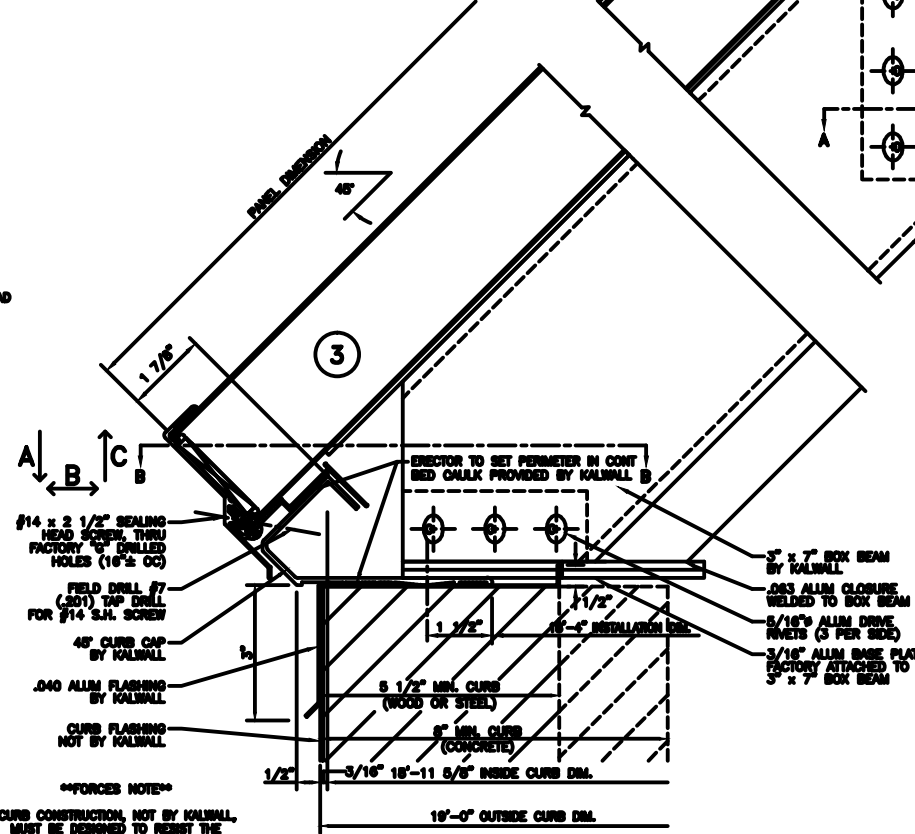
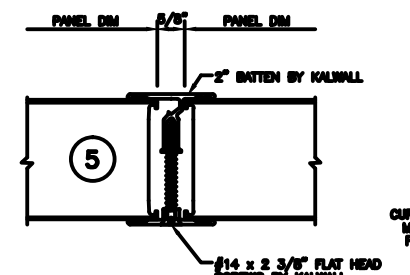
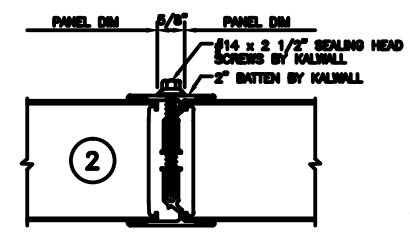
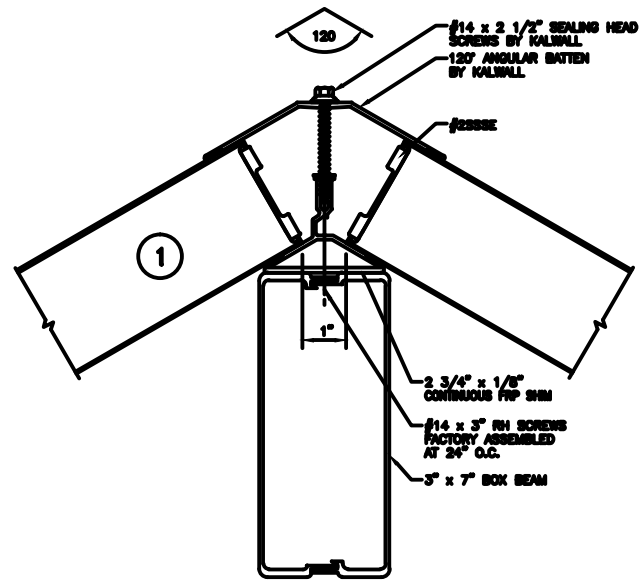
**SECTION B-B**



**SECTION A-A**



**CURB CAP PLAN**



**\*\*FORCES NOTE\*\***  
CURB CONSTRUCTION, NOT BY KALWALL, MUST BE DESIGNED TO RESIST THE FOLLOWING FORCES PRODUCED BY  
A: PEF LIVE LOAD  
A: PEF WIND LOAD  
A: PEF SNOW LOAD  
A: PEF DRIFT LOAD  
A: \_\_\_\_\_ LBS/SIDE  
B: \_\_\_\_\_ LBS/SIDE  
C: \_\_\_\_\_ LBS/SIDE

CURB TYPE	FASTERER #	SPACING
WOOD	#14 R.H. S.S. - 4" L.G.	24" O.C.
STEEL	#14 R.H. S.S. - 1" L.G.	24" O.C.
CONCRETE	1/4" x 3 1/4" POWER STUD ON #7001	24" O.C.

NOT SUPPLIED BY KALWALL UNLESS INSTALLED BY KALWALL  
ALL FASTENERS TO BE IN HOLE 1/8" LARGER THAN FASTENER DIA.  
HOLE AT CENTER OF CURB TO BE SAME DIA. AS FASTENER

**KALWALL**<sup>®</sup>  
high performance translucent building systems