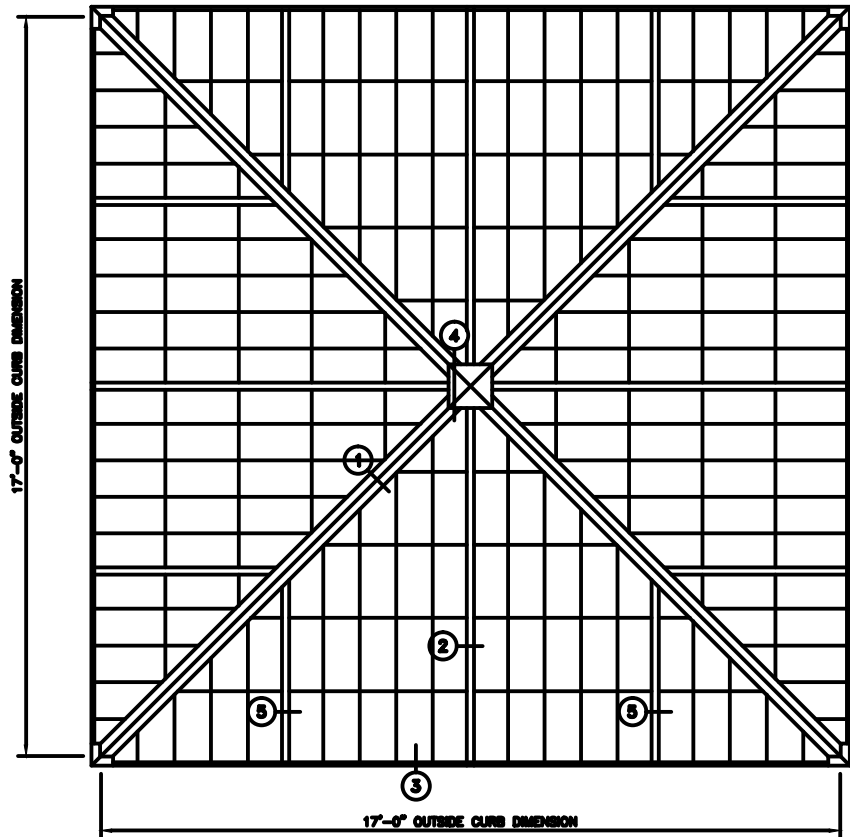
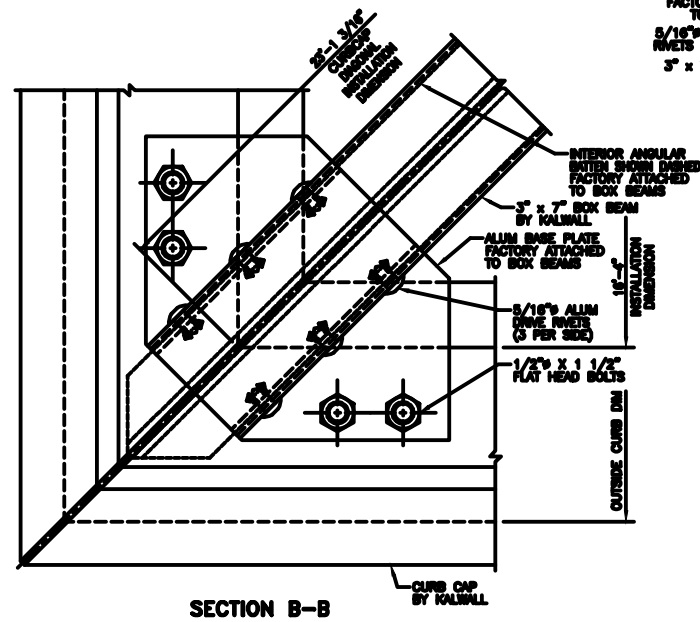


33.33° - 17'-0" PYRAMID



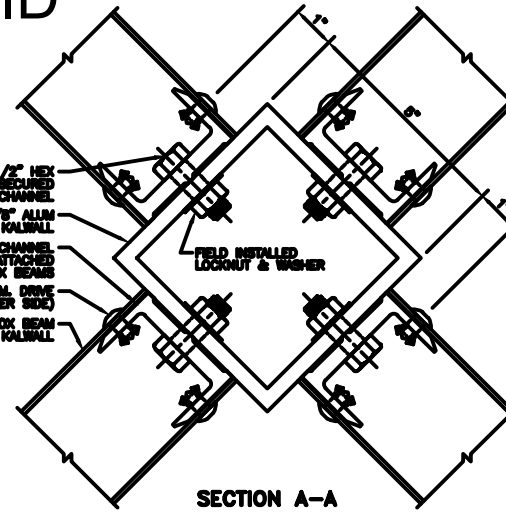
PYRAMID PLAN
NOTE: SHIPPED IN 8 UNITS

↑ SLOPE
↓ SLOPE

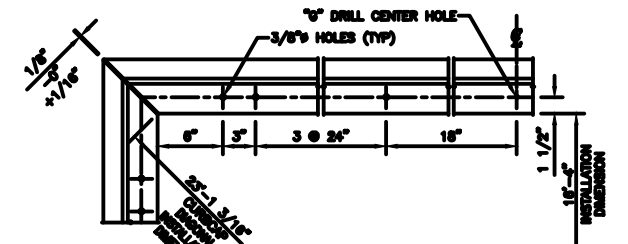


SECTION B-B

1/2" x 1 1/2" HEX HEAD BOLTS SECURED TO BASE CHANNEL
5" x 5" x 3/8" ALUM TUBE BY KALWALL
ALUM BASE CHANNEL FACTORY ATTACHED TO BOX BEAMS
5/16" ALUM DRIVE RIVETS (3 PER SIDE)
3" x 7" BOX BEAM BY KALWALL



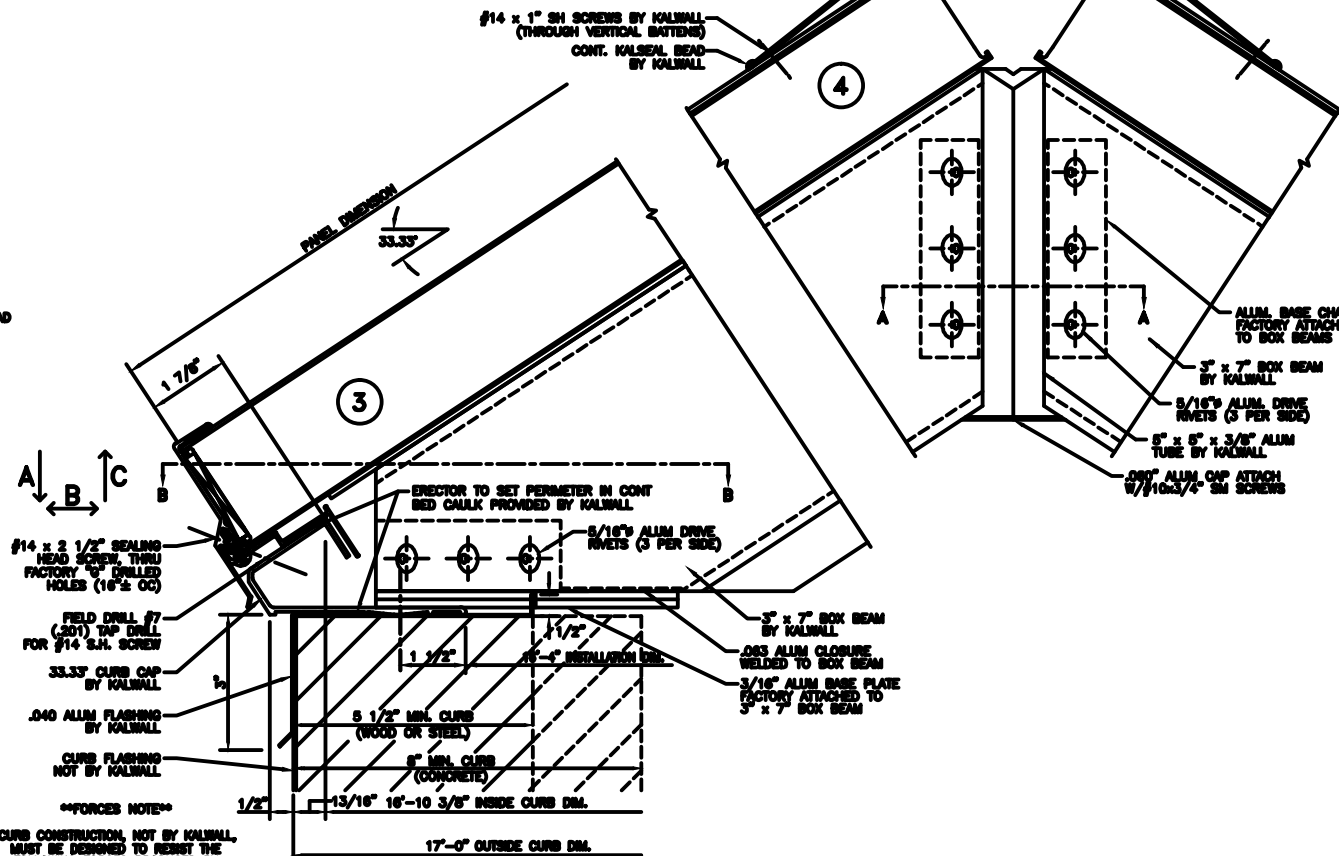
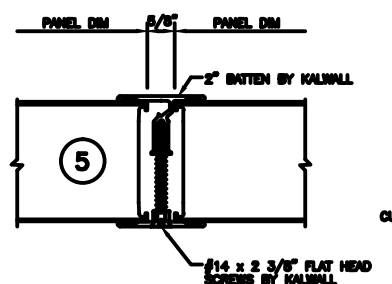
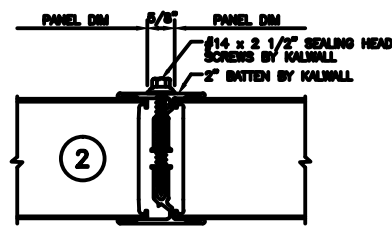
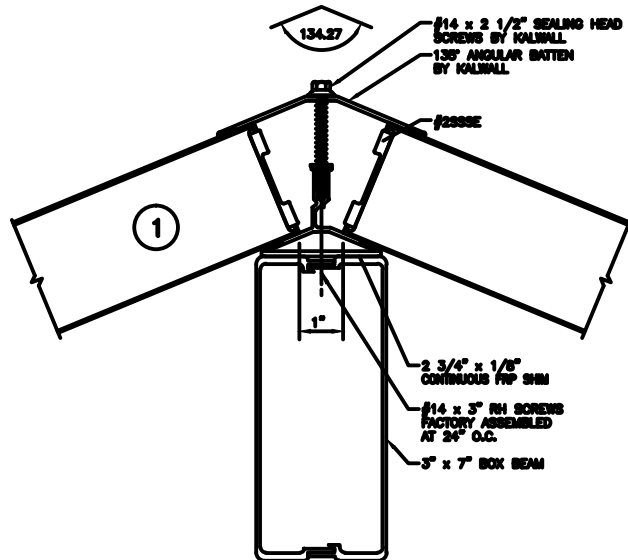
SECTION A-A



CURB CAP PLAN

CURB TYPE	FASTER #	SPACING
WOOD	#14 R.H. S.S. - 4" L.G.	24" O.C.
STEEL	#14 R.H. S.S. - 1" L.G.	24" O.C.
CONCRETE	1/4" x 3 1/4" POWER STUD CH #7401	24" O.C.

NOT SUPPLIED BY KALWALL UNLESS INSTALLED BY KALWALL
ALL FASTENERS TO BE IN HOLE 1/8" LARGER THAN FASTENER DIA.
HOLE AT CENTER OF CURB TO BE SAME DIA. AS FASTENER



****FORCED NOTE****
CURB CONSTRUCTION, NOT BY KALWALL, MUST BE DESIGNED TO RESIST THE FOLLOWING FORCES PRODUCED BY
A PFF LIVE LOAD
A PFF SNOW LOAD
A PFF DRIFT LOAD
A: _____ LBS/SIDE
B: _____ LBS/SIDE
C: _____ LBS/SIDE

KALWALL[®]
high performance translucent building systems