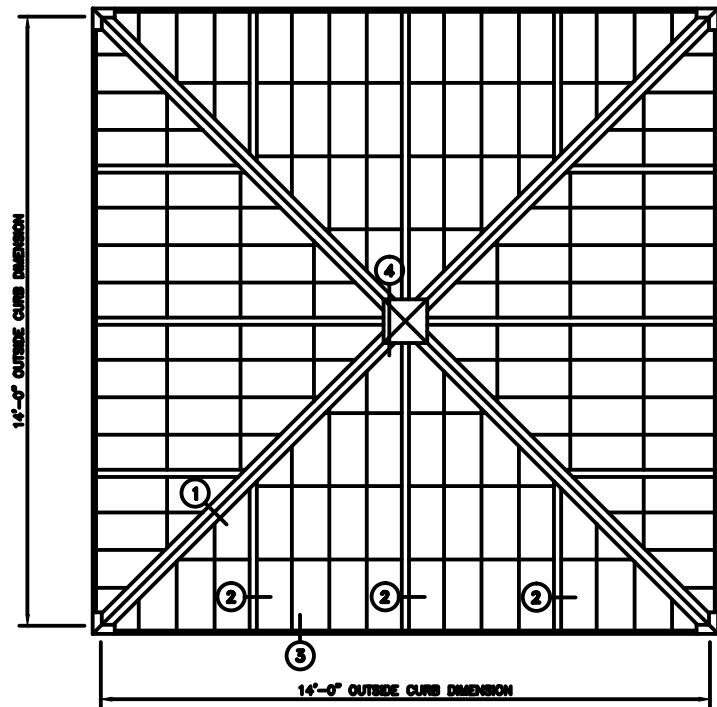


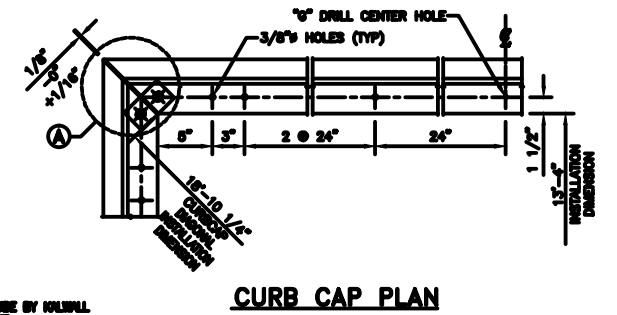
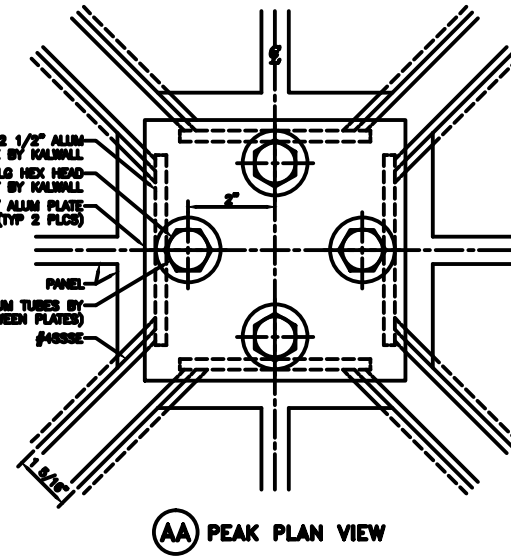
27.25° - 14'-0" PYRAMID

SHOP NOTE
1K1 UNITS HAVE BATTERY ANGULAR BATTERING FACTORY ATTACHED (SEE DETAIL)

INSTALLER NOTE
ASSEMBLE 1K1 UNITS TO COMPRESSION RIB AND CURB BEFORE 1K2 UNITS



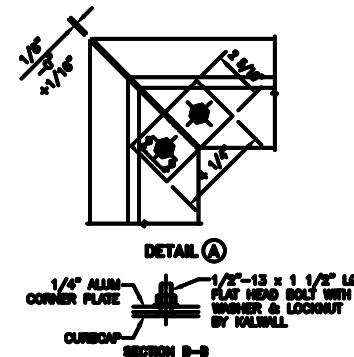
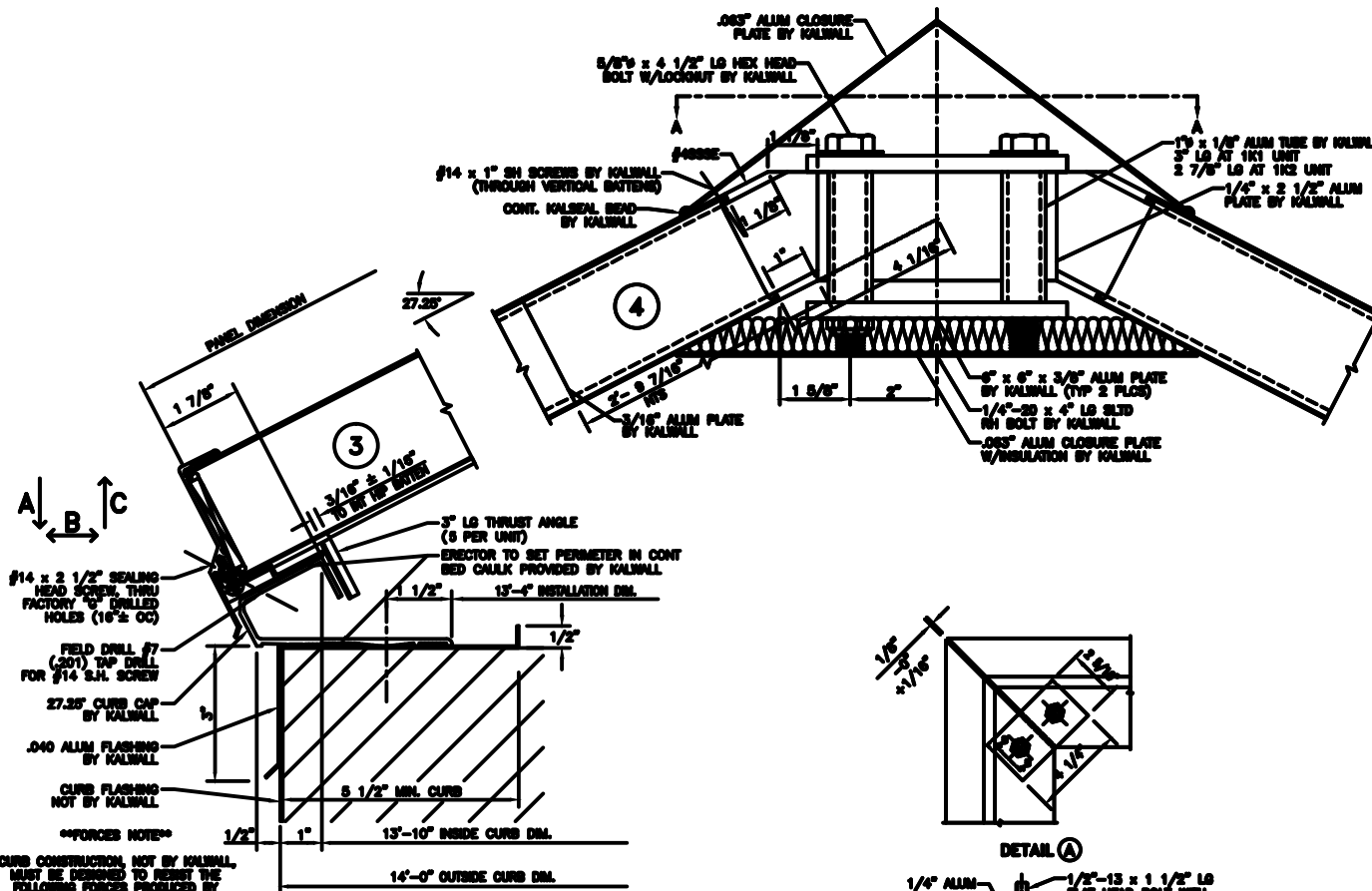
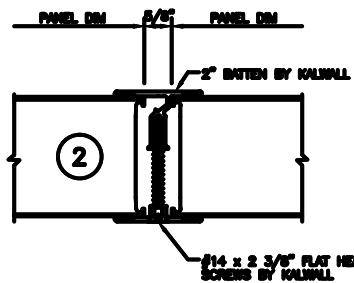
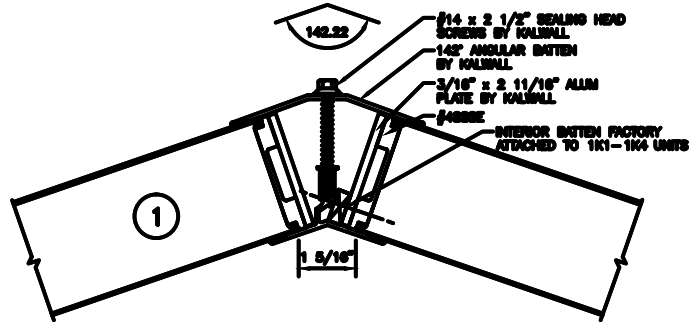
PYRAMID PLAN
NOTE: SHIPPED IN 4 UNITS



SUGGESTED FASTENING OF CURB CAP TO CURB

CURB TYPE	FASENER #	SPACING
WOOD	#14 R.H. S.S. - 4" LG.	24" O.C.
STEEL	#14 R.H. S.S. - 1" LG.	24" O.C.
CONCRETE	1/2" x 3 1/2" FIBER STRIP BY #2081	24" O.C.

2"NOT SUPPLIED BY KALWALL UNLESS ORDERED BY KALWALL
ALL FASTENERS TO BE IN HOLE 1/8" LARGER THAN FASTENER DIA.
HOLE AT CENTER OF CURB TO BE SAME DIA. AS FASTENER



FORCED NOTE
CURB CONSTRUCTION NOT BY KALWALL. MUST BE DESIGNED TO RESIST THE FOLLOWING FORCES PRODUCED BY:
A: P/W LINE LOAD
A: P/W SNOW LOAD
A: P/W DRIFT LOAD
A: _____ LBS/SIDE
B: _____ LBS/SIDE
C: _____ LBS/SIDE

KALWALL[®]
high performance translucent building systems