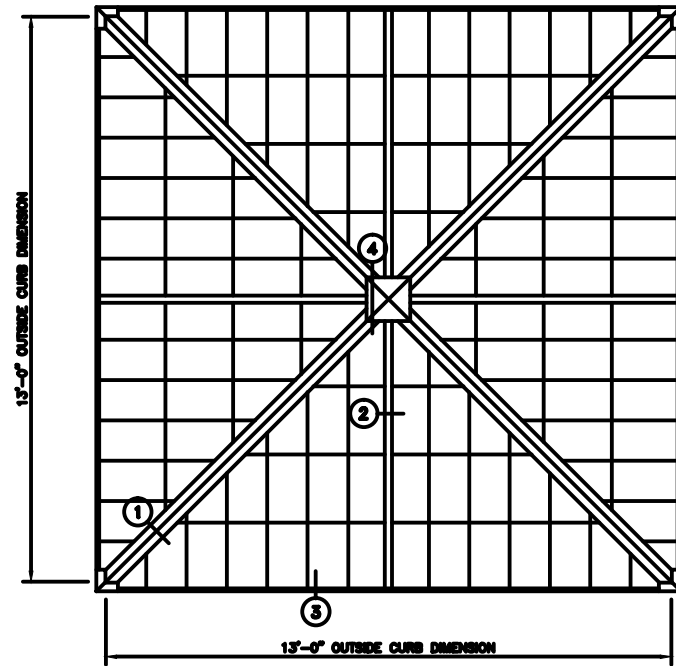


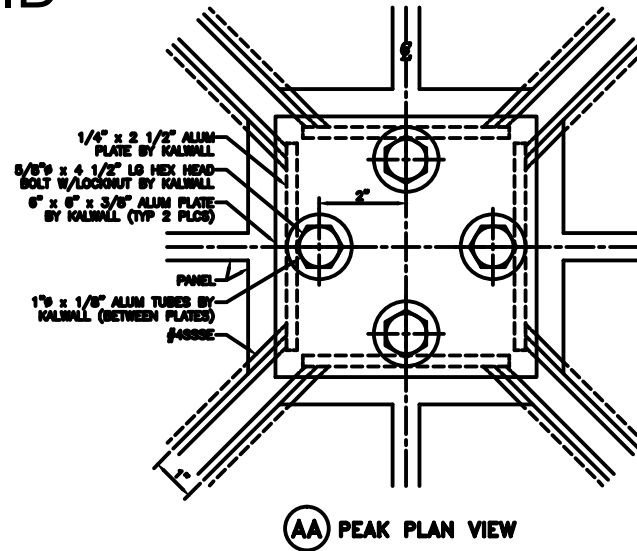
33.33° - 13'-0" PYRAMID

**** SHOP NOTE ****
1K1 UNITS HAVE INTERIOR ANGULAR
BATTENS FACTORY ATTACHED (SEE DETAIL)

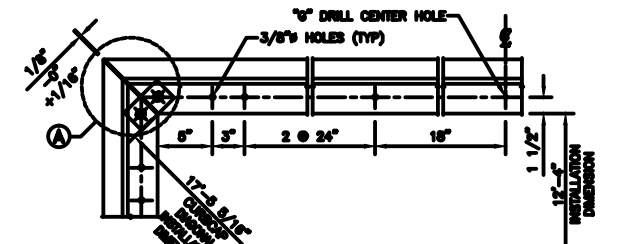
**** INSTALLER NOTE ****
ASSEMBLE 1K1 UNITS TO COMPRESSION
RIB AND CURB BEFORE 1K2 UNITS



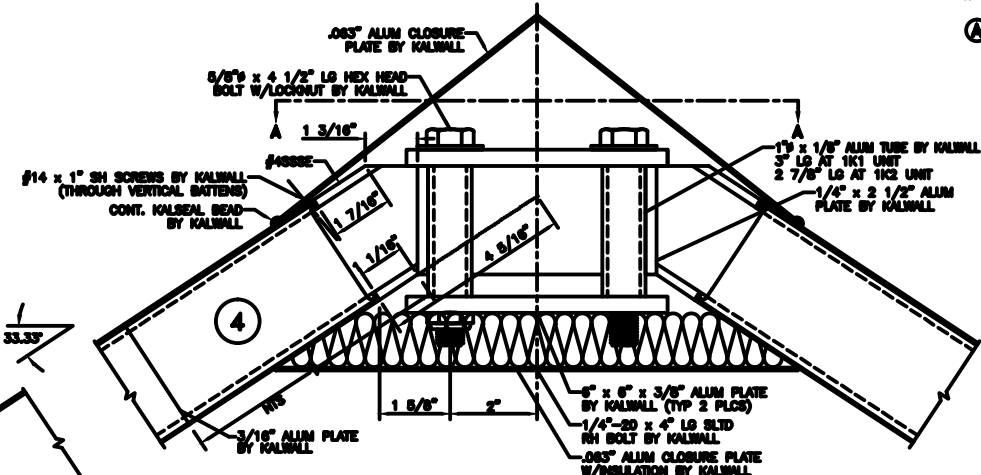
PYRAMID PLAN
NOTE: SHIPPED IN 4 UNITS



AA PEAK PLAN VIEW



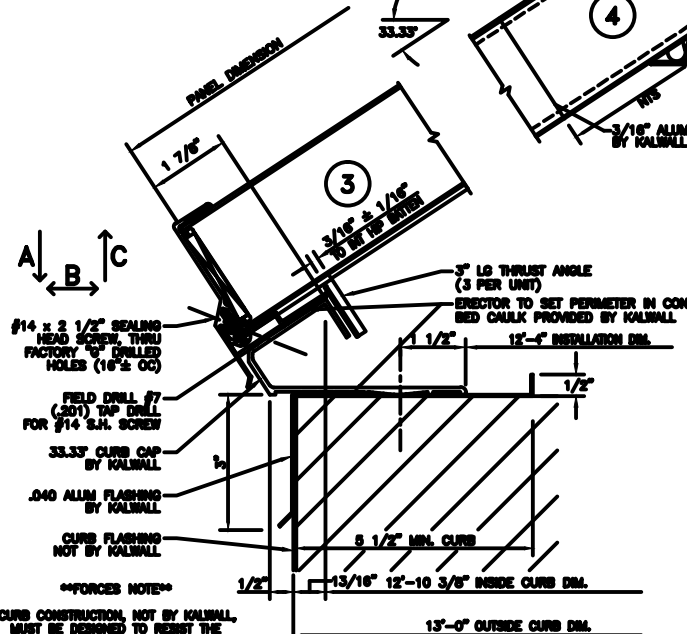
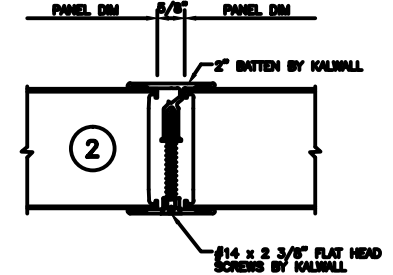
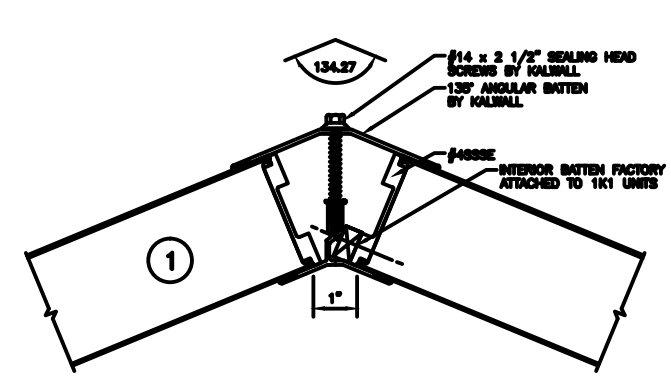
CURB CAP PLAN



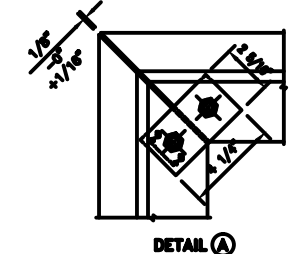
SUGGESTED FASTENING OF CURB CAP TO CURB

| CURB TYPE | FASTENER & SPACING |
|-----------|--|
| WOOD | #14 R.H. S.S. - 4" L.G. 24" O.C. |
| STEEL | #14 R.H. S.S. - 1" L.G. 24" O.C. |
| CONCRETE | 1/4" x 3 1/4" POWER STUD CH #7404 24" O.C. |

NOT SUPPLIED BY KALWALL UNLESS INSTALLED BY KALWALL
ALL FASTENERS TO BE IN HOLE 1/8" LARGER THAN FASTENER DIA.
HOLE AT CENTER OF CURB TO BE SAME DIA. AS FASTENER



****FORCED NOTE****
CURB CONSTRUCTION, NOT BY KALWALL, MUST BE DESIGNED TO RESIST THE FOLLOWING FORCES PRODUCED BY
A: PEF LIVE LOAD
A: PEF SNOW LOAD
A: PEF DRIFT LOAD
A: _____ LBS/SIDE
B: _____ LBS/SIDE
C: _____ LBS/SIDE



DETAIL A

KALWALL[®]
high performance translucent building systems