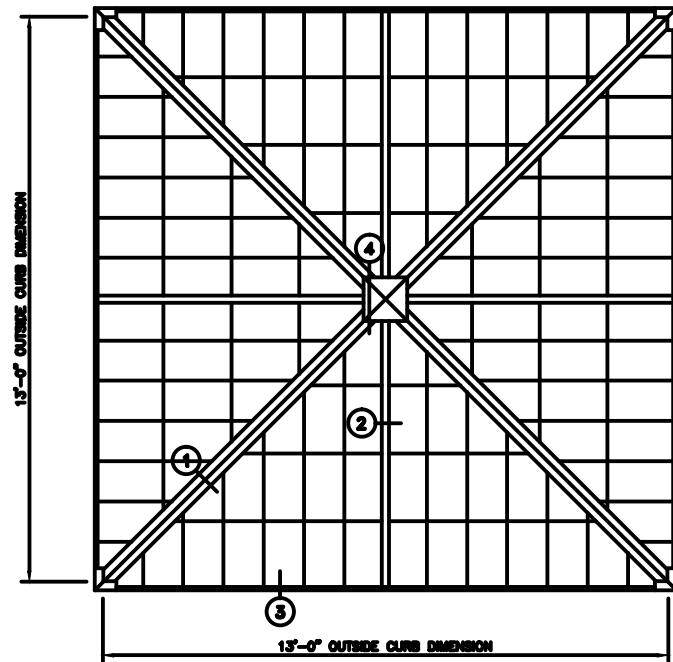


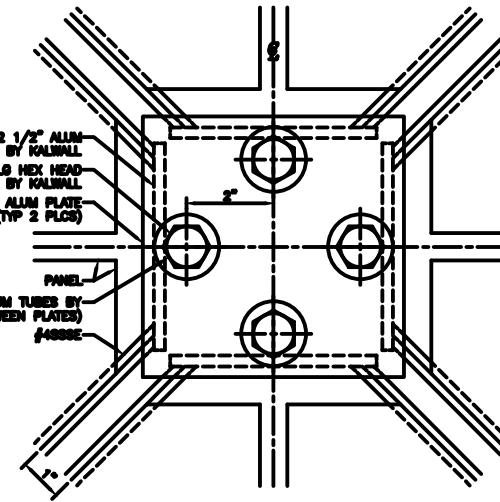
# 27.25° - 13'-0" PYRAMID

**\*\* SHOP NOTE \*\***  
1K1 UNITS HAVE INTERIOR ANGULAR BATTENS FACTORY ATTACHED (SEE DETAIL)

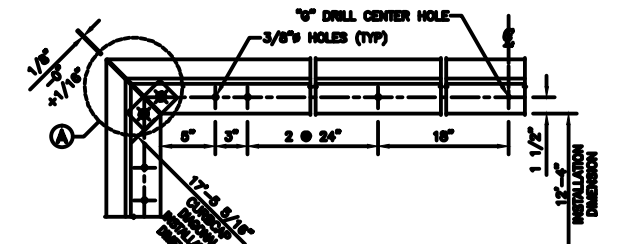
**\*\* INSTALLER NOTE \*\***  
ASSEMBLE 1K1 UNITS TO COMPRESSION RIB AND CURB BEFORE 1K2 UNITS



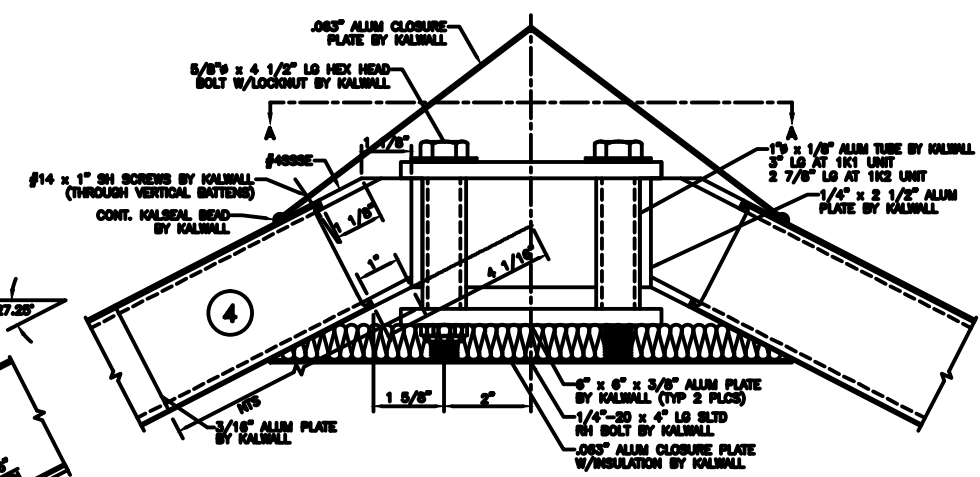
**PYRAMID PLAN**  
NOTE: SHIPPED IN 4 UNITS



**AA PEAK PLAN VIEW**



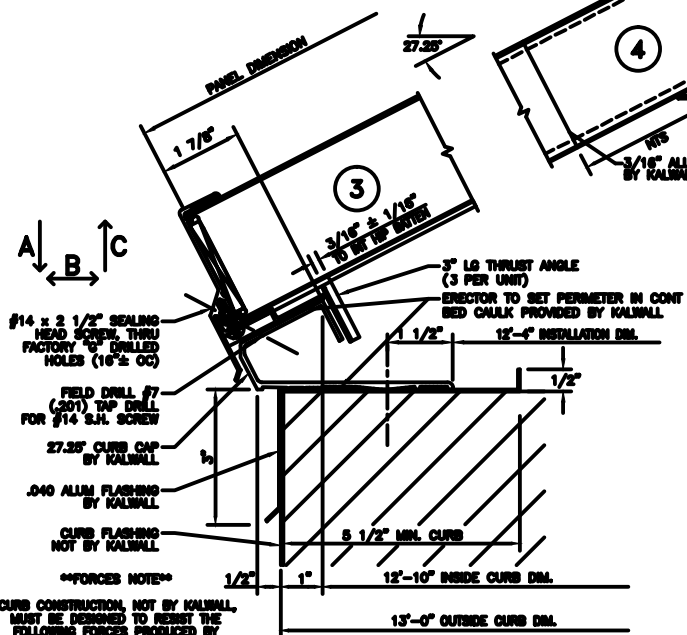
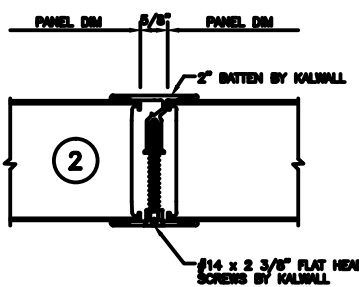
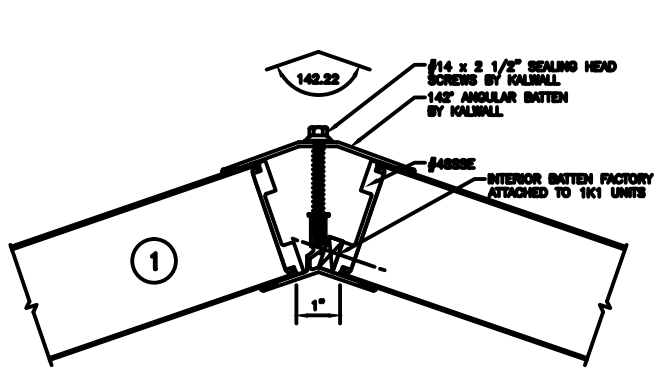
**CURB CAP PLAN**



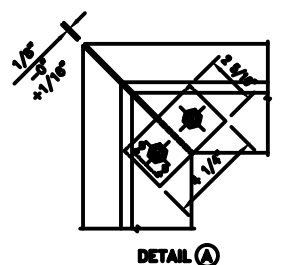
**SUGGESTED FASTENING OF CURB CAP TO CURB**

CURB TYPE	FASTENER & SPACING
WOOD	#14 R.H. S.S. - 4" L.G. 24" O.C.
STEEL	#14 R.H. S.S. - 1" L.G. 24" O.C.
CONCRETE	1/4" x 3 1/4" POWER STUD ON #4001 24" O.C.

NOT SUPPLIED BY KALWALL UNLESS INSTALLED BY KALWALL  
ALL FASTENERS TO BE IN HOLE 1/8" LARGER THAN FASTENER DIA.  
HOLE AT CENTER OF CURB TO BE SAME DIA. AS FASTENER



**\*\*FORCES NOTE\*\***  
CURB CONSTRUCTION, NOT BY KALWALL, MUST BE DESIGNED TO RESIST THE FOLLOWING FORCES PRODUCED BY  
A: PEF LIVE LOAD  
A: PEF SNOW LOAD  
A: PEF DRIFT LOAD  
A: \_\_\_\_\_ LBS/SIDE  
B: \_\_\_\_\_ LBS/SIDE  
C: \_\_\_\_\_ LBS/SIDE



**DETAIL A**

**KALWALL**<sup>®</sup>  
high performance translucent building systems