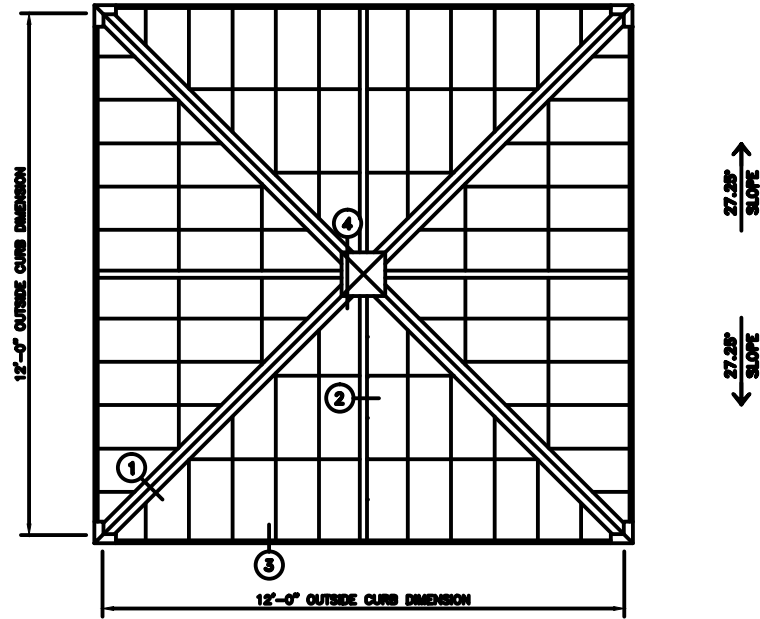


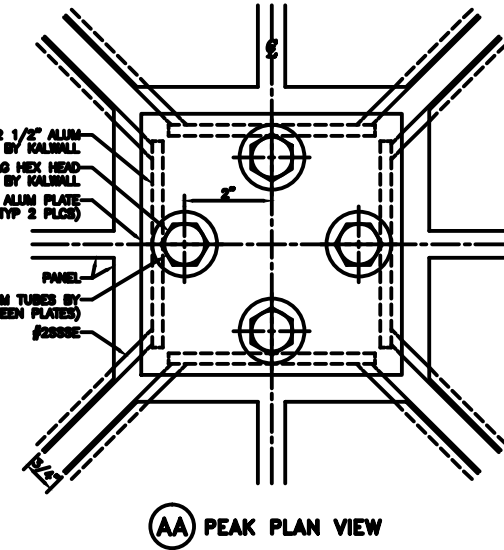
27.25° - 12'-0" PYRAMID

**** SHOP NOTE ****
1K1 UNITS HAVE INTERIOR ANGULAR BATTENS FACTORY ATTACHED (SEE DETAIL)

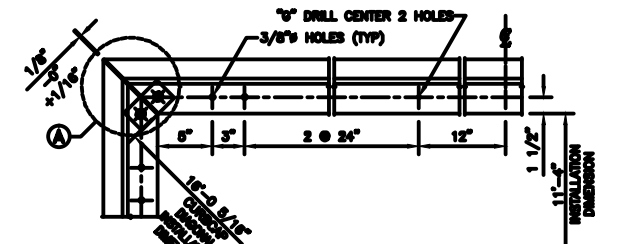
**** INSTALLER NOTE ****
ASSEMBLE 1K1 UNITS TO COMPRESSION RING AND CURB BEFORE 1K2 UNITS



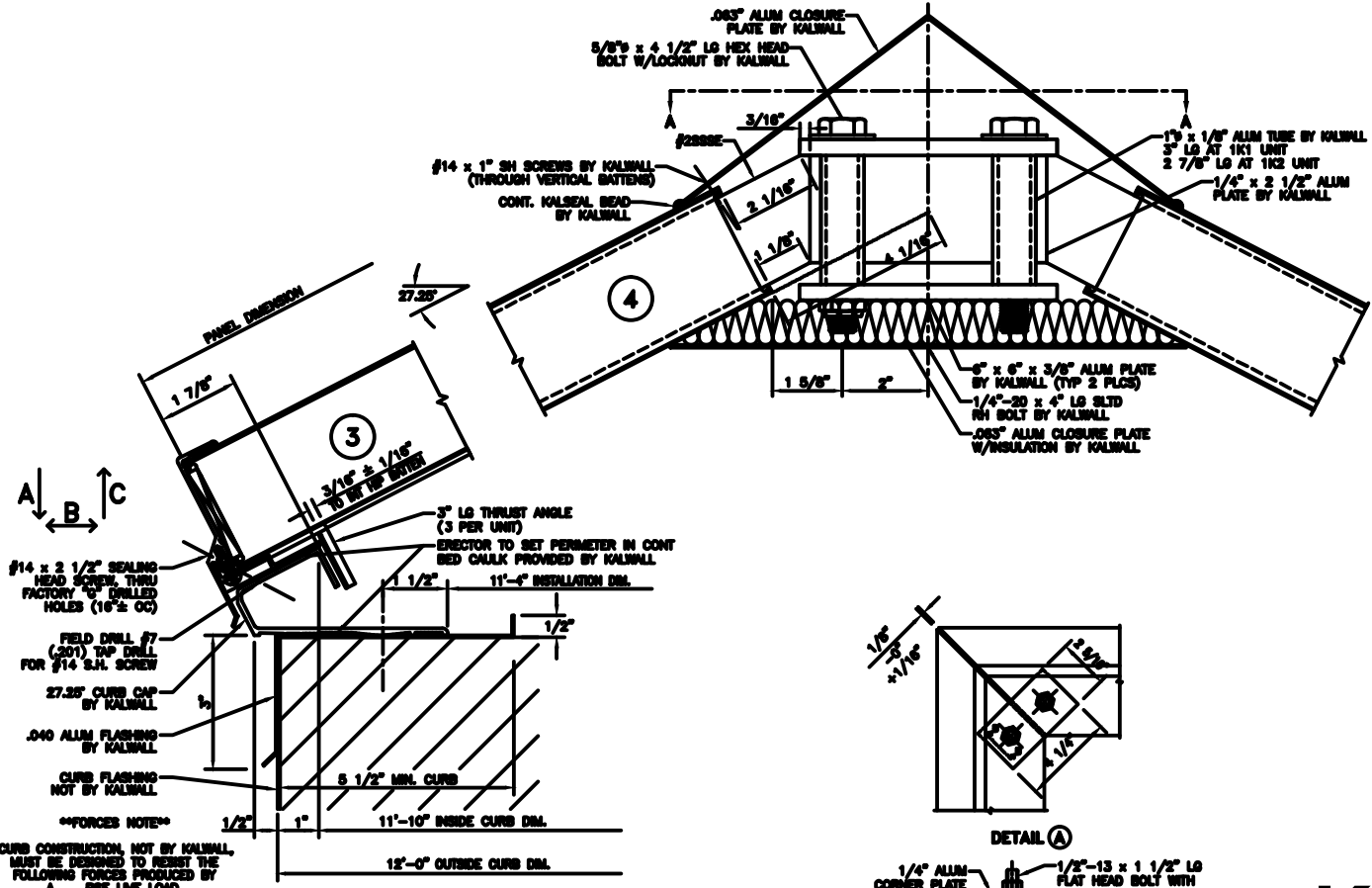
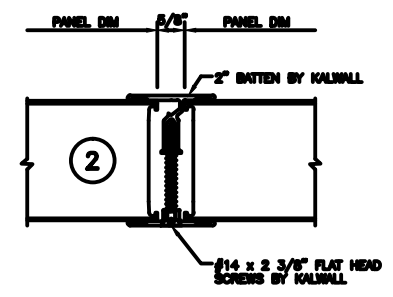
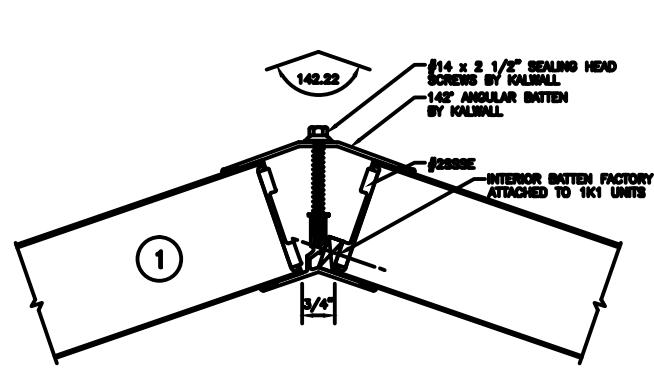
PYRAMID PLAN
NOTE: SHIPPED IN 4 UNITS



(AA) PEAK PLAN VIEW



CURB CAP PLAN

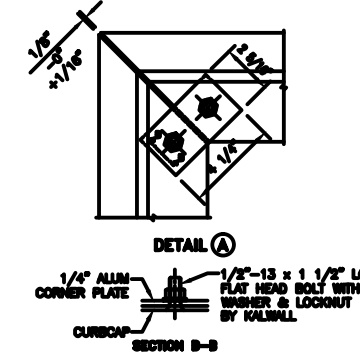


****FORCES NOTE****
CURB CONSTRUCTION, NOT BY KALWALL, MUST BE DESIGNED TO RESIST THE FOLLOWING FORCES PRODUCED BY:
A: PEF LIVE LOAD
A: PEF SNOW LOAD
A: PEF DRIFT LOAD
A: _____ LBS/SIDE
B: _____ LBS/SIDE
C: _____ LBS/SIDE

SUGGESTED FASTENING OF CURB CAP TO CURB

CURB TYPE	FASTENER &	SPACING
WOOD	#14 R.H. S.S. - 4" LG.	24" O.C.
STEEL	#14 R.H. S.S. - 1" LG.	24" O.C.
CONCRETE	1/4" x 3 1/4" POWER STUD ON #4001	24" O.C.

NOT SUPPLIED BY KALWALL UNLESS INSTALLED BY KALWALL
ALL FASTENERS TO BE IN HOLE 1/8" LARGER THAN FASTENER DIA.
HOLE AT CENTER OF CURB TO BE SAME DIA. AS FASTENER



DETAIL (A)

KALWALL[®]
high performance translucent building systems