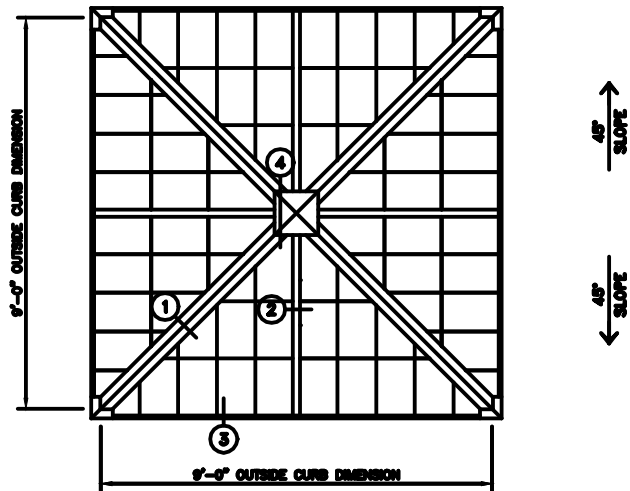


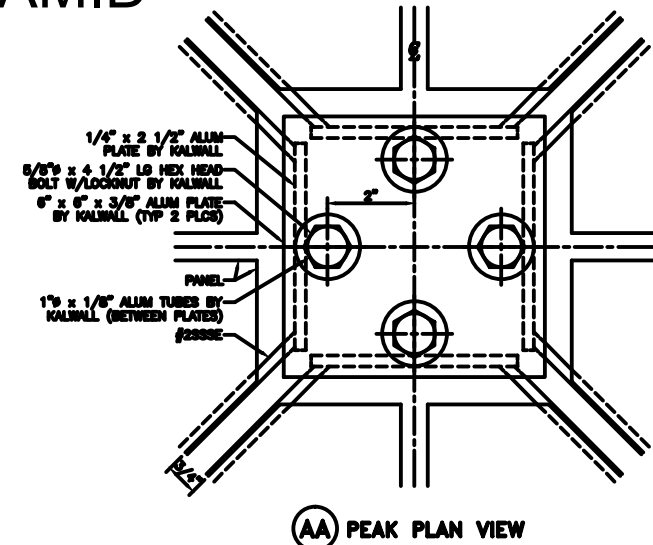
45° - 9'-0" PYRAMID

SHOP NOTE
1K1 UNITS HAVE INTERIOR ANGULAR BATTENS FACTORY ATTACHED (SEE DETAIL)

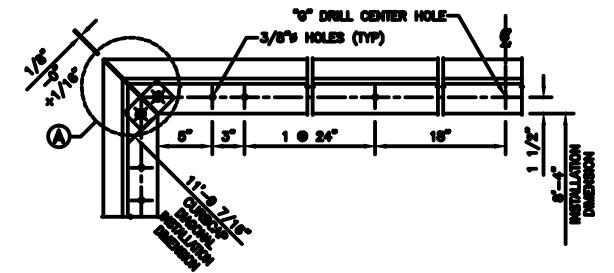
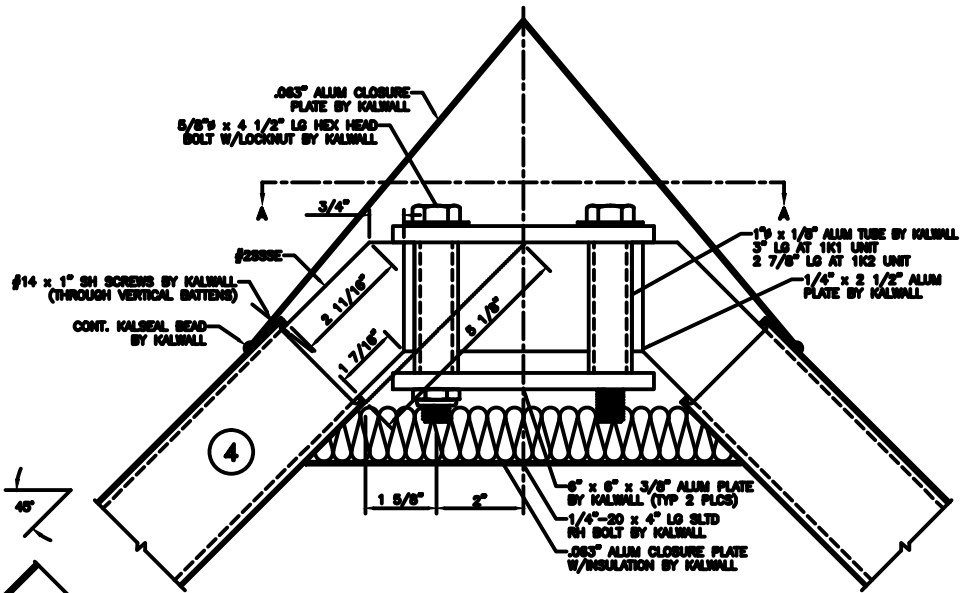
INSTALLER NOTE
ASSEMBLE 1K1 UNITS TO COMPRESSION RING AND CURB BEFORE 1K2 UNITS



PYRAMID PLAN
NOTE: SHIPPED IN 4 UNITS



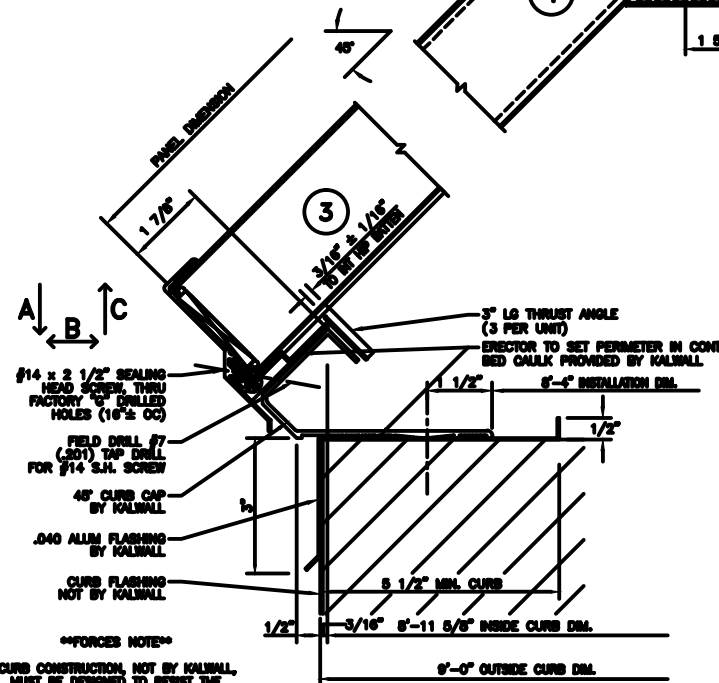
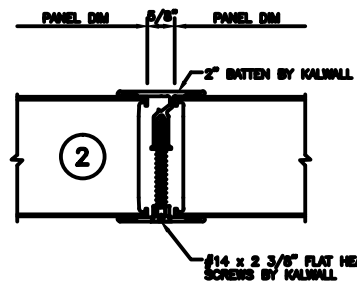
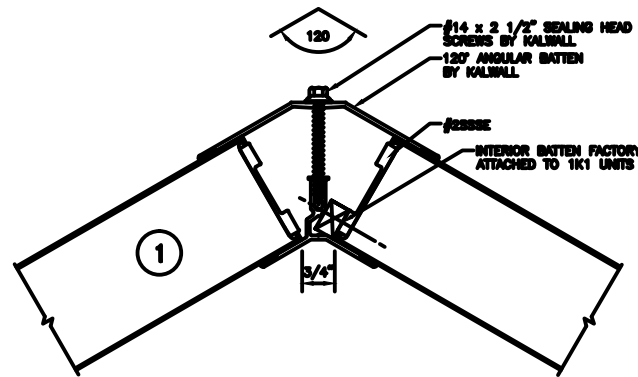
AA PEAK PLAN VIEW



CURB CAP PLAN

SUGGESTED FASTENING OF CURB CAP TO CURB		
CURB TYPE	FASTENER & SPACING	SPACING
WOOD	#14 R.H. S.S. - 4" L.G.	24" O.C.
STEEL	#14 R.H. S.S. - 1" L.G.	24" O.C.
CONCRETE	1/4" x 3 1/4" POWER STUD ON #4001	24" O.C.

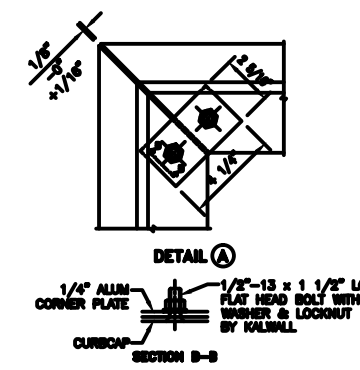
NOT SUPPLIED BY KALWALL UNLESS INSTALLED BY KALWALL
ALL FASTENERS TO BE IN HOLE 1/8" LARGER THAN FASTENER DIA.
HOLE AT CENTER OF CURB TO BE SAME DIA. AS FASTENER



FORCES NOTE
CURB CONSTRUCTION, NOT BY KALWALL, MUST BE DESIGNED TO RESIST THE FOLLOWING FORCES PRODUCED BY

- A: PEF LIVE LOAD
- A: PEF SNOW LOAD
- A: PEF DRIFT LOAD

A: _____ LBS/SIDE
B: _____ LBS/SIDE
C: _____ LBS/SIDE



DETAIL A

KALWALL[®]
high performance translucent building systems