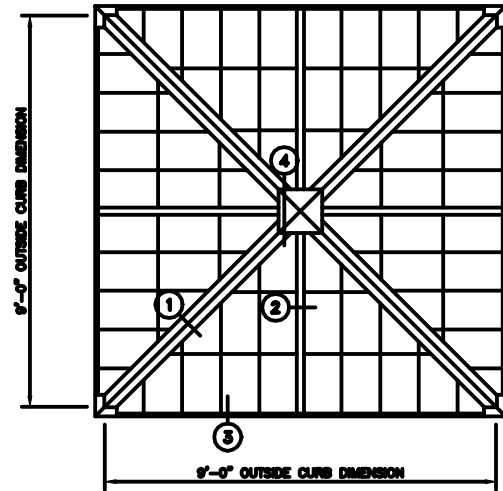


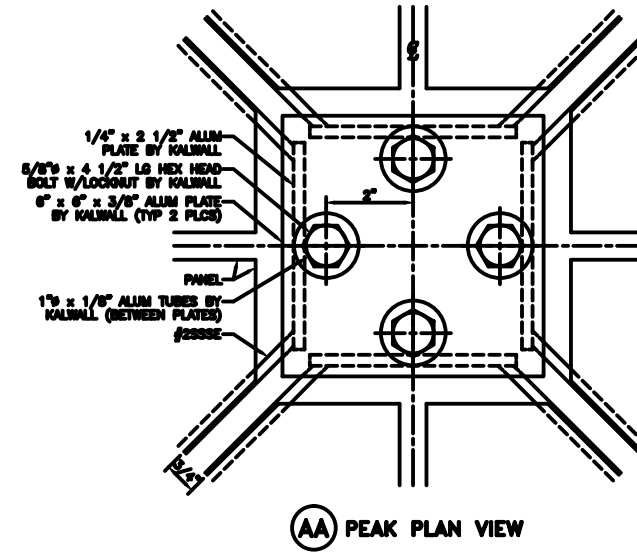
# 33.33° - 9'-0" PYRAMID

SHOP NOTE  
1K1 UNITS HAVE INTERIOR ANGULAR  
BATTENS FACTORY ATTACHED (SEE DETAIL)

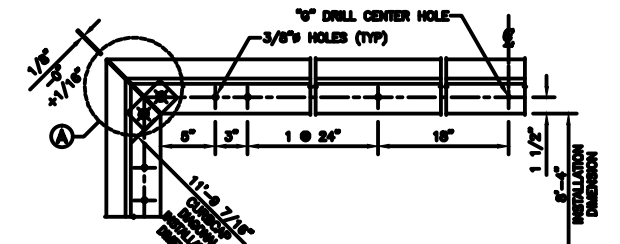
INSTALLER NOTE  
ASSEMBLE 1K1 UNITS TO COMPRESSION  
RING AND CURB BEFORE 1K2 UNITS



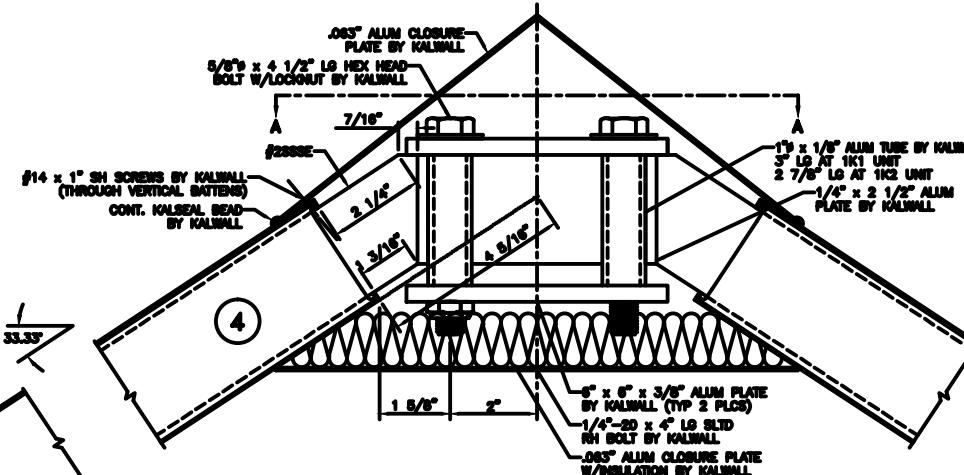
**PYRAMID PLAN**  
NOTE: SHIPPED IN 4 UNITS



**(AA) PEAK PLAN VIEW**



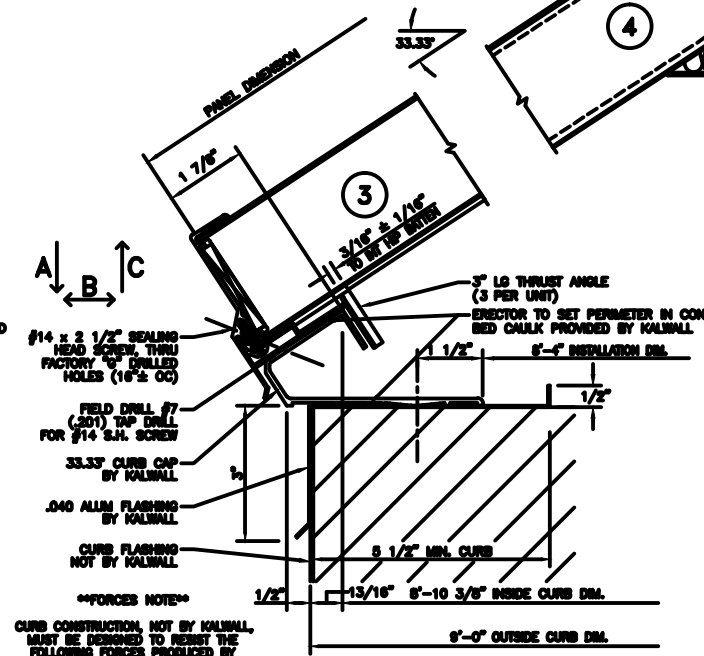
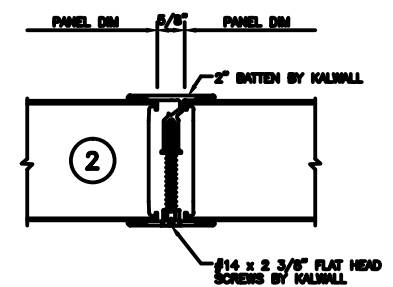
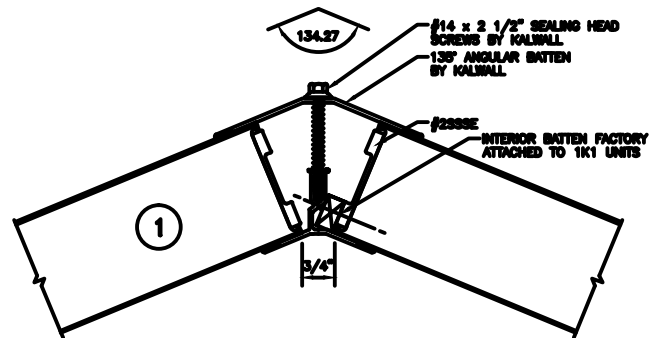
**CURB CAP PLAN**



**SUGGESTED FASTENING OF CURB CAP TO CURB**

CURB TYPE	FASTENER & SPACING
WOOD	#14 R.H. S.S. - 4" L.G. 24" O.C.
STEEL	#14 R.H. S.S. - 1" L.G. 24" O.C.
CONCRETE	1/4" x 3 1/4" POWER STUD CH #7405 24" O.C.

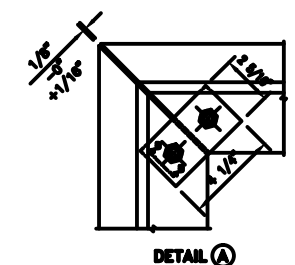
NOT SUPPLIED BY KALWALL UNLESS INSTALLED BY KALWALL  
ALL FASTENERS TO BE IN HOLE 1/8" LARGER THAN FASTENER DIA.  
HOLE AT CENTER OF CURB TO BE SAME DIA. AS FASTENER



FORCED NOTE  
CURB CONSTRUCTION, NOT BY KALWALL, MUST BE DESIGNED TO RESIST THE FOLLOWING FORCES PRODUCED BY

- A: PEF LIVE LOAD
- A: PEF SNOW LOAD
- A: PEF DRIFT LOAD

A: \_\_\_\_\_ LBS/SIDE  
B: \_\_\_\_\_ LBS/SIDE  
C: \_\_\_\_\_ LBS/SIDE



**DETAIL (A)**  
SECTION B-B

**KALWALL**<sup>®</sup>  
high performance translucent building systems