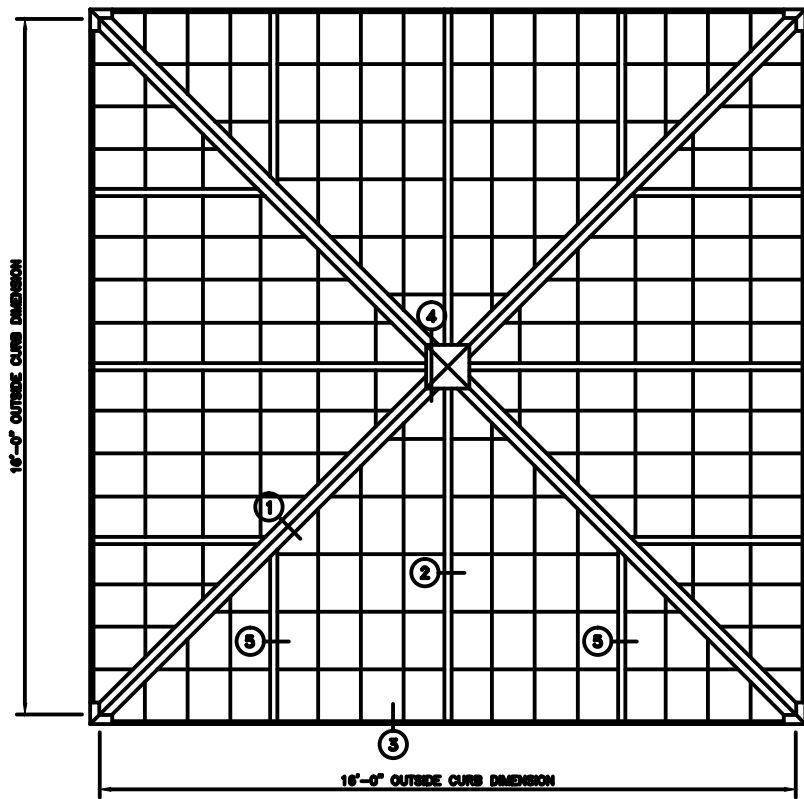
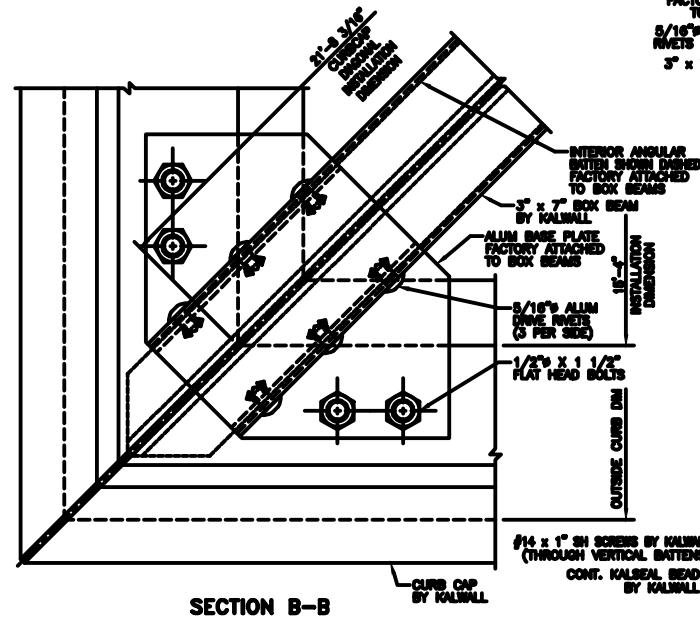


45° - 16'-0" PYRAMID

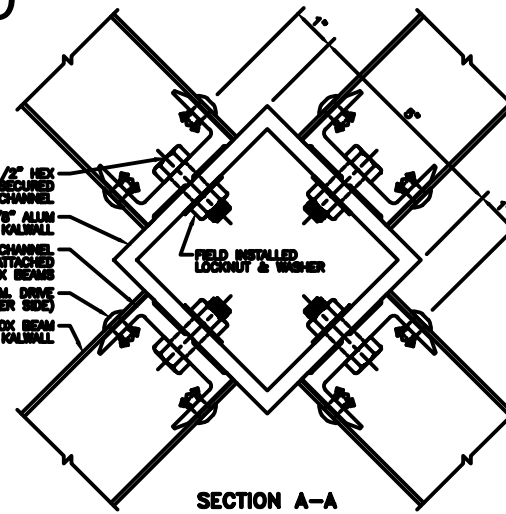


PYRAMID PLAN
NOTE: SHIPPED IN 8 UNITS

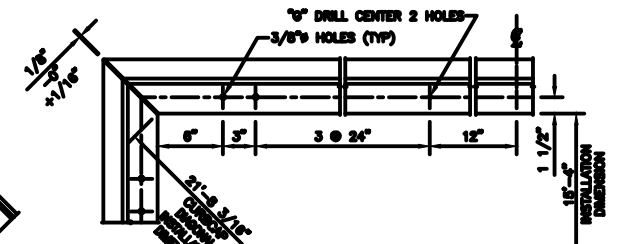
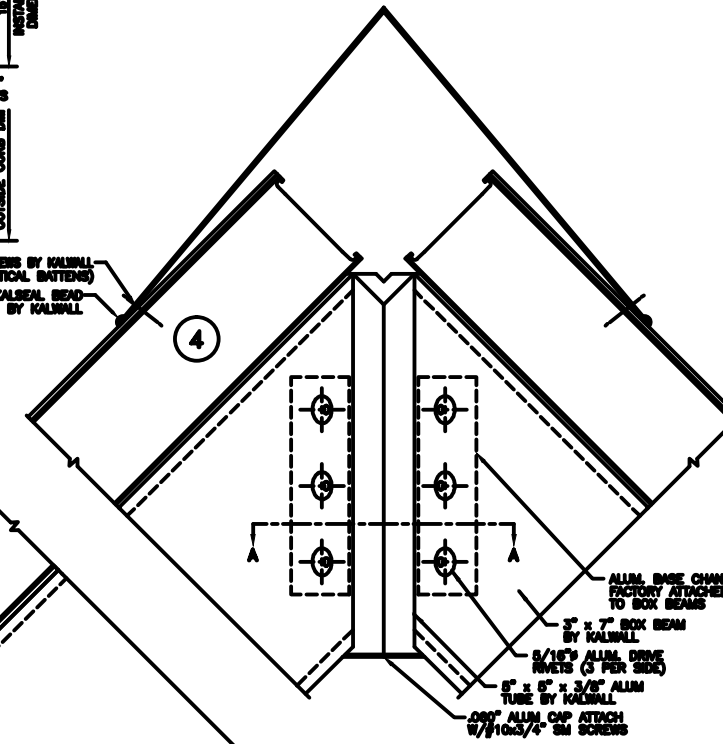
45° SLOPE
45° SLOPE



SECTION B-B



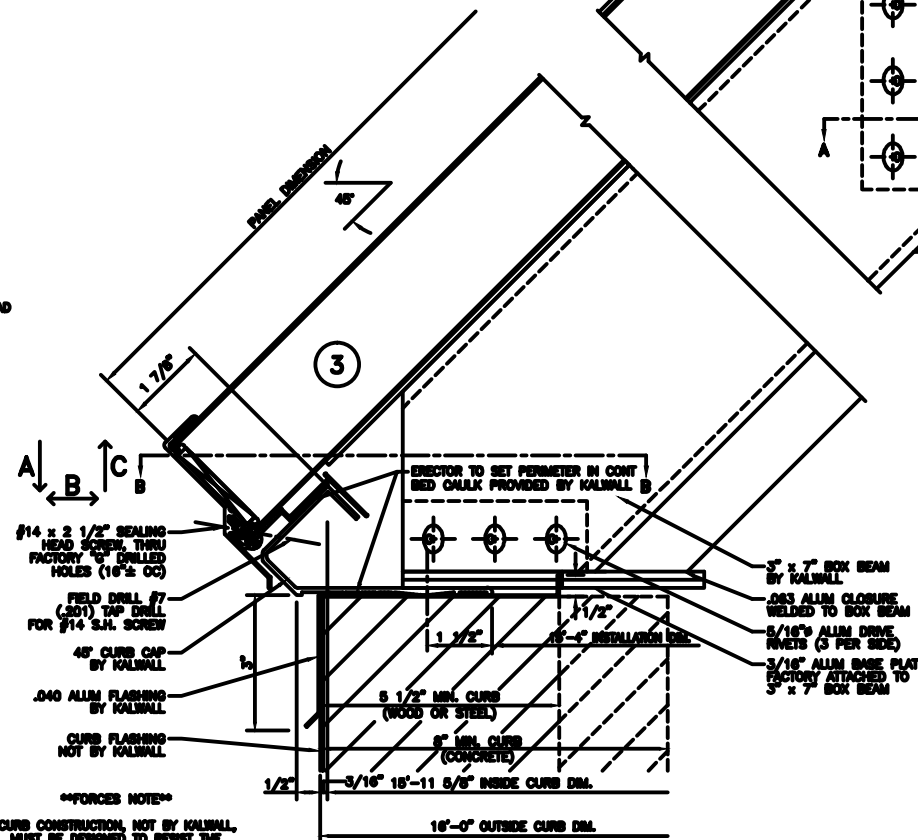
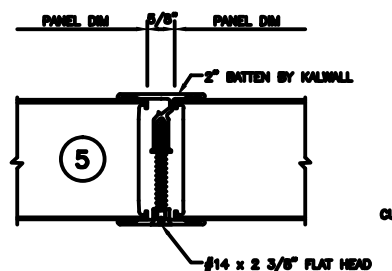
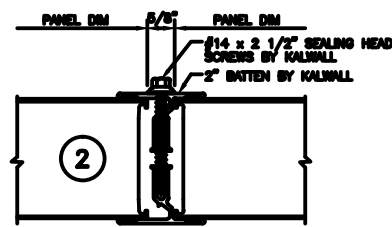
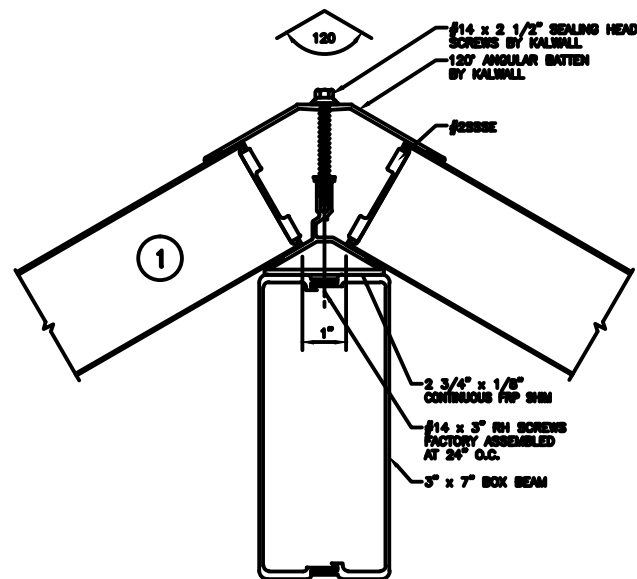
SECTION A-A



CURB CAP PLAN

SUGGESTED FASTENING OF CURB CAP TO CURB		
CURB TYPE	FASTERER &	SPACING
WOOD	#14 R.H. S.S. - 4" L.G.	24" O.C.
STEEL	#14 R.H. S.S. - 1" L.G.	24" O.C.
CONCRETE	1/4" x 3 1/4" POWER STUD CH #7001	24" O.C.

NOT SUPPLIED BY KALWALL UNLESS INSTALLED BY KALWALL
ALL FASTENERS TO BE IN HOLE 1/8" LARGER THAN FASTERER DIA.
HOLE AT CENTER OF CURB TO BE SAME DIA. AS FASTERER



****FORCES NOTE****
CURB CONSTRUCTION, NOT BY KALWALL, MUST BE DESIGNED TO RESIST THE FOLLOWING FORCES PRODUCED BY
A: PEF LIVE LOAD
A: PEF SNOW LOAD
A: PEF DRIFT LOAD
A: _____ LBS/SIDE
B: _____ LBS/SIDE
C: _____ LBS/SIDE

KALWALL[®]
high performance translucent building systems