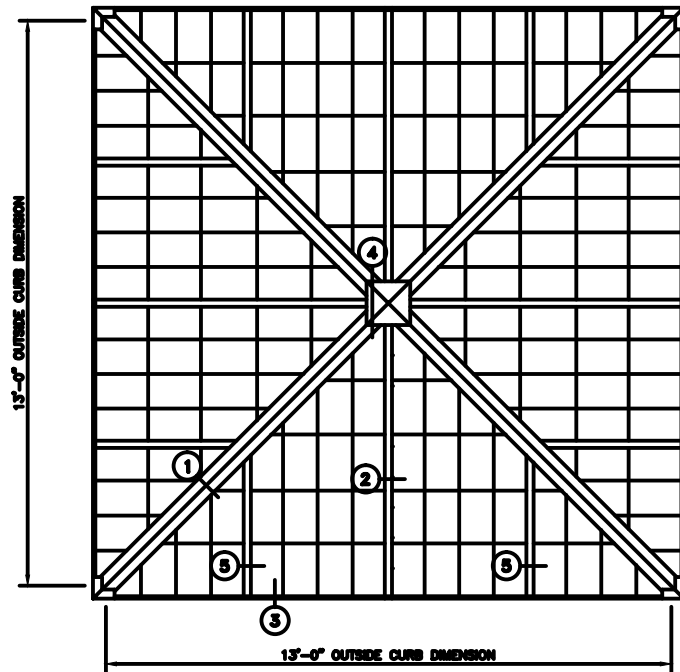


45° - 13'-0" PYRAMID

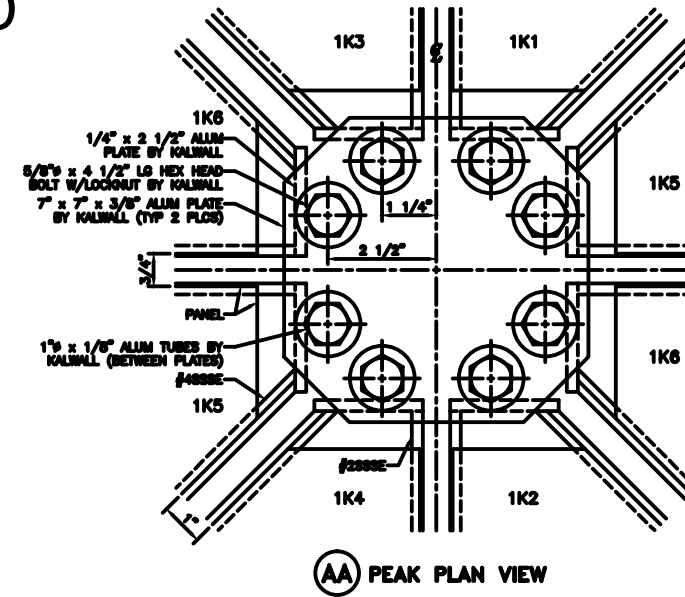
SHOP NOTE
 1K1, 1K2, 1K3 & 1K4 UNITS HAVE INC. ANGULAR BATTENS FACTORY ATTACHED (SEE DETAIL)
 1K1, 1K2 & 1K5 UNITS HAVE INTERIOR TEE BATTENS FACTORY ATTACHED (SEE DETAIL)
 EXTERIOR ANGULAR BATTEN DRILLED 6" FROM TOP & 6" FROM BOTTOM
 EXTERIOR TEE BATTEN DRILLED 6" FROM TOP

INSTALLER NOTE
 ORDER OF FIELD ASSEMBLY
 1 2 3 4 5 6 7 8
 1K1 1K2 1K3 1K4 1K5 1K6 1K8 1K9
 NOTE: TIGHTEN ALL SEVEN BOLTS AND ATTACH INTERIOR PLATE BEFORE INSTALLING THE LAST 1K6 UNIT

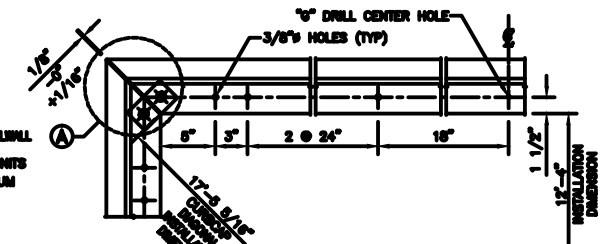
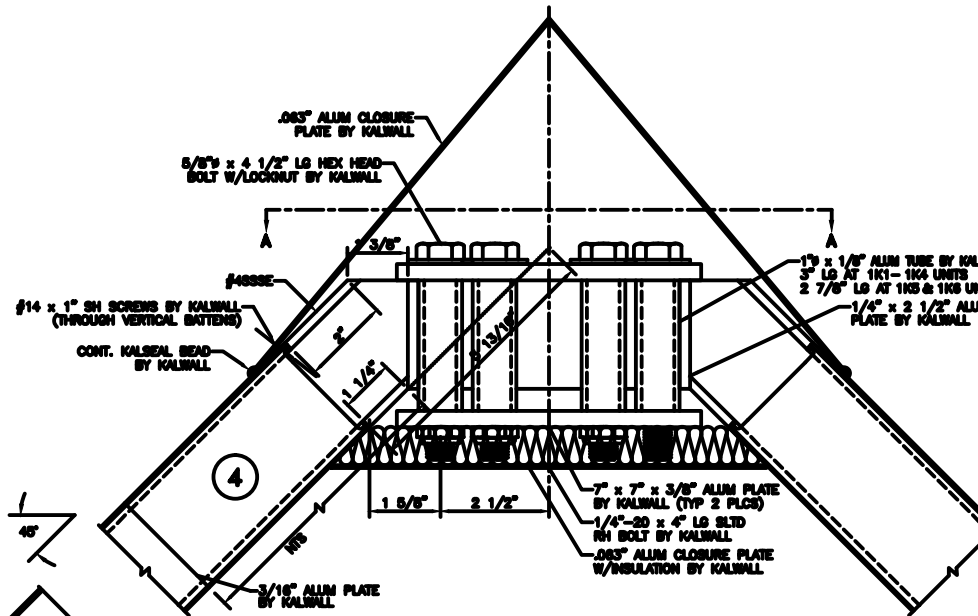
UNIT	FACTORY INSTALLED INTERIOR BATTEN	1" TUBE AT TOP OF UNIT
1K1	2" TEE AND ANGULAR HP BATTEN	3" LG
1K2	2" TEE AND ANGULAR HP BATTEN	3" LG
1K3	ANGULAR HP BATTEN	3" LG
1K4	ANGULAR HP BATTEN	3" LG
1K5	2" TEE BATTEN	2 7/8" LG
1K6	NONE	2 7/8" LG



PYRAMID PLAN
 NOTE: SHIPPED IN 8 UNITS



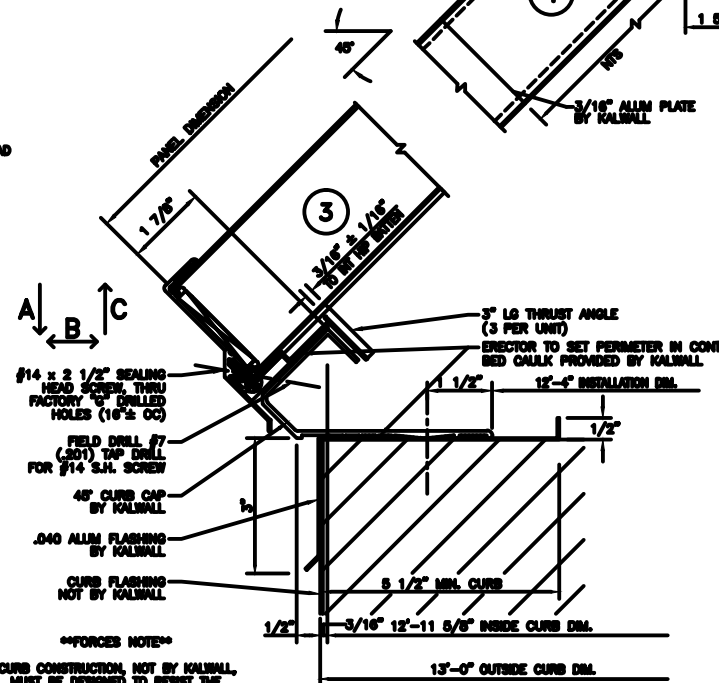
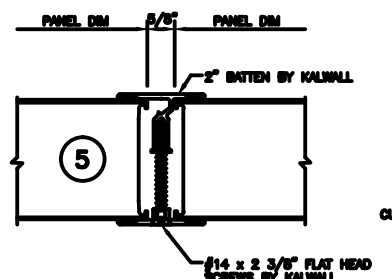
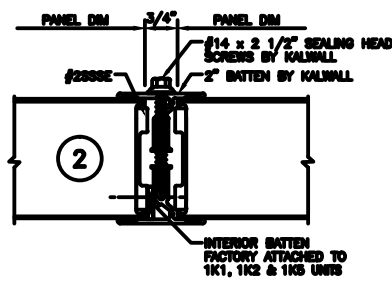
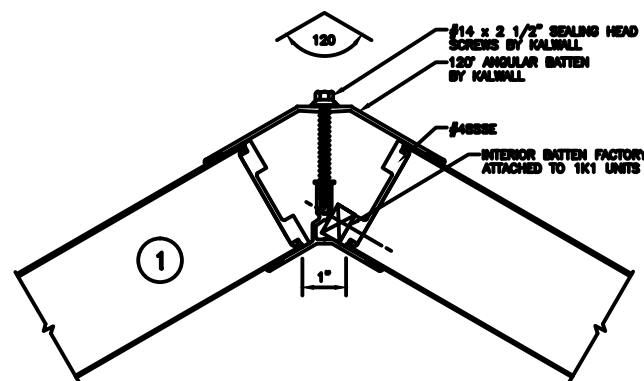
AA PEAK PLAN VIEW



CURB CAP PLAN

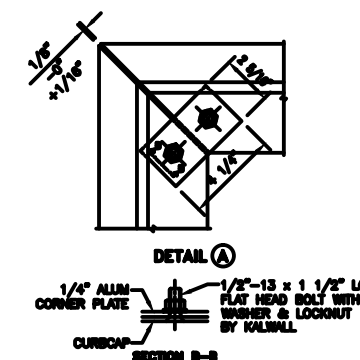
CURB TYPE	FASTERER & SPACING
WOOD	#14 R.H. S.S. - 4" LG. 24" O.C.
STEEL	#14 R.H. S.S. - 1" LG. 24" O.C.
CONCRETE	1/4" x 3 1/4" POWER STUD ON #4088 24" O.C.

NOT SUPPLIED BY KALWALL UNLESS INSTALLED BY KALWALL
 ALL FASTENERS TO BE IN HOLE 1/8" LARGER THAN FASTENER DIA.
 HOLE AT CENTER OF CURB TO BE SAME DIA. AS FASTENER



FORCES NOTE
 CURB CONSTRUCTION, NOT BY KALWALL, MUST BE DESIGNED TO RESIST THE FOLLOWING FORCES PRODUCED BY
 A: PEF LIVE LOAD
 A: PEF WIND LOAD
 A: PEF SNOW LOAD
 A: PEF DRIFT LOAD

A: _____ LBS/SIDE
 B: _____ LBS/SIDE
 C: _____ LBS/SIDE



DETAIL A

KALWALL[®]
 high performance translucent building systems