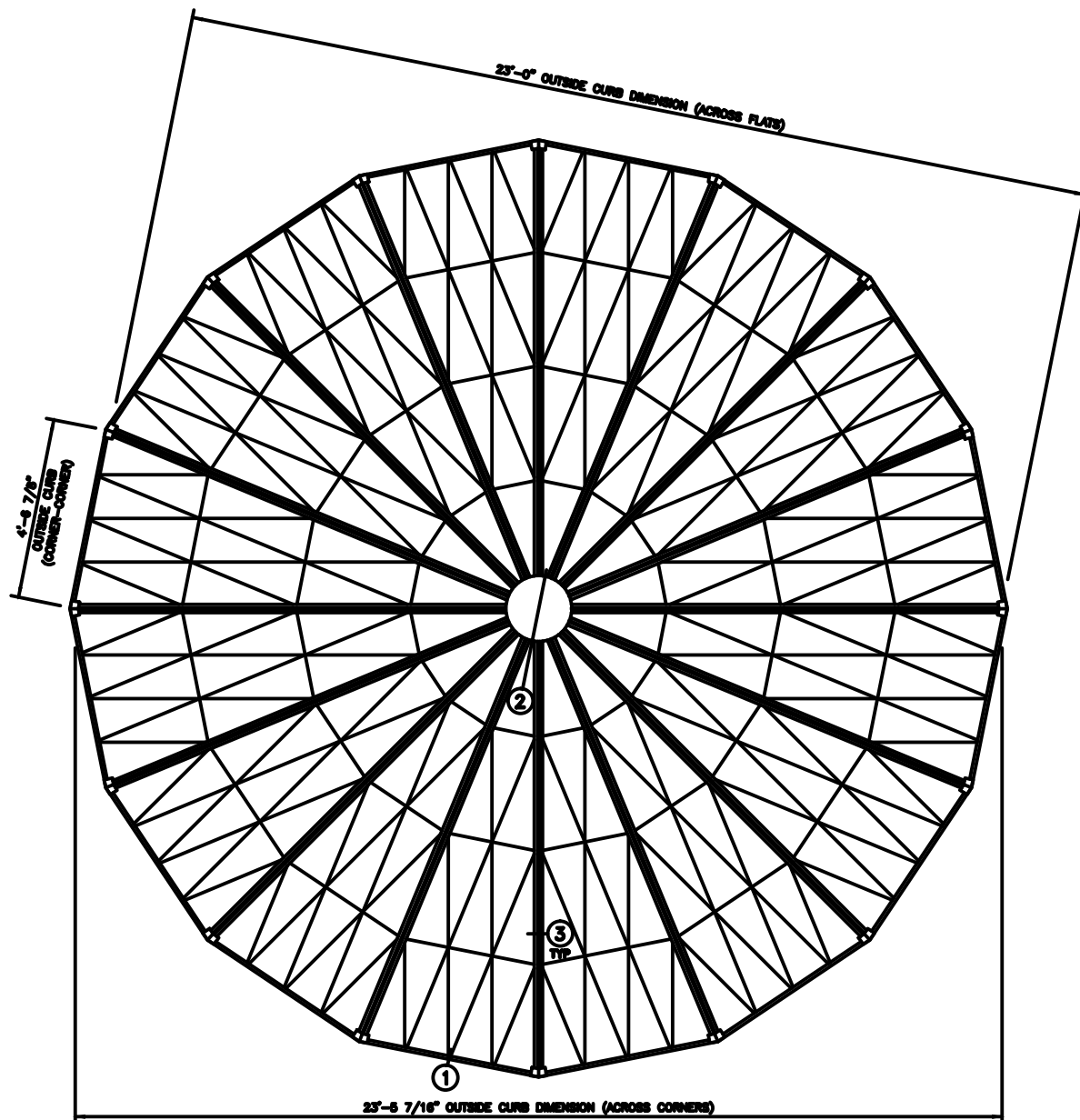
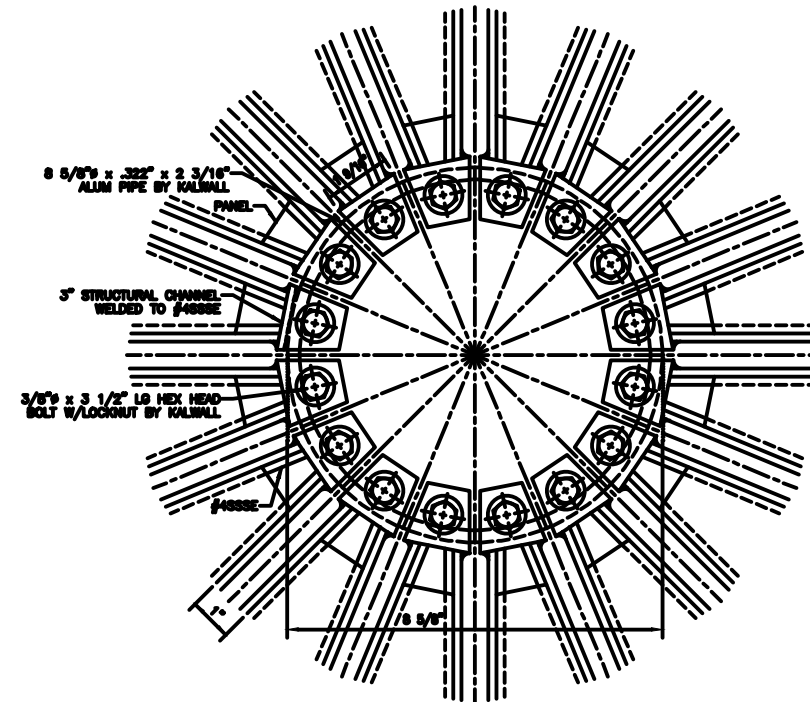


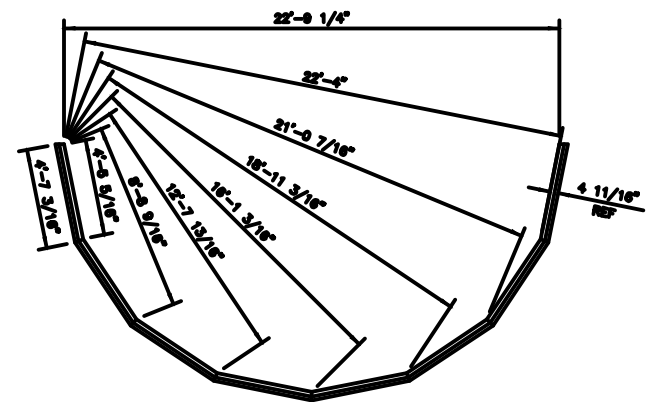
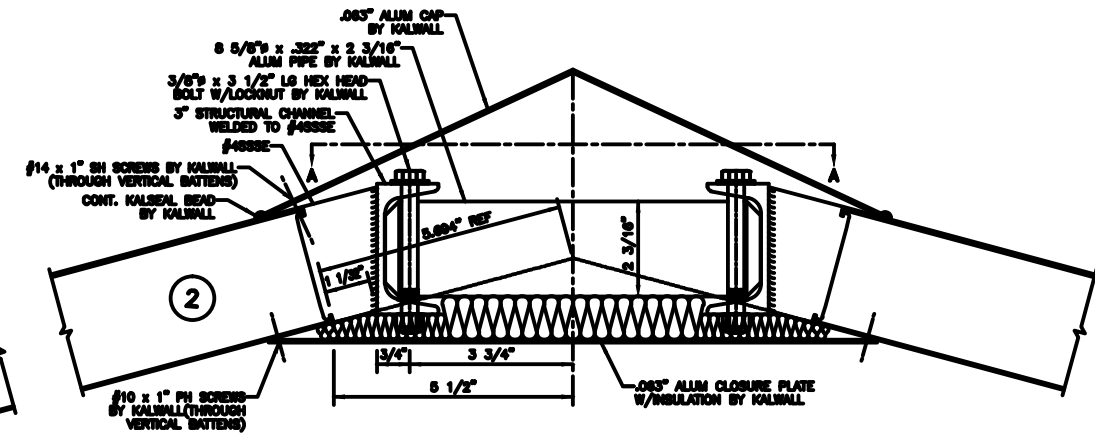
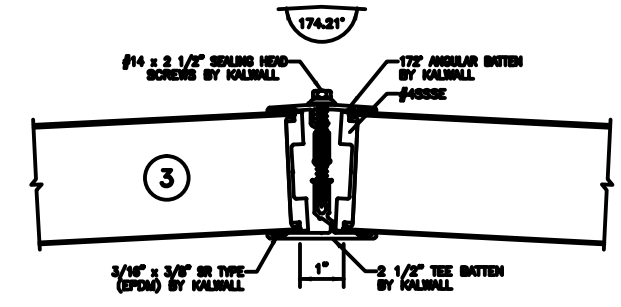
# 23'-0" GEO ROOF



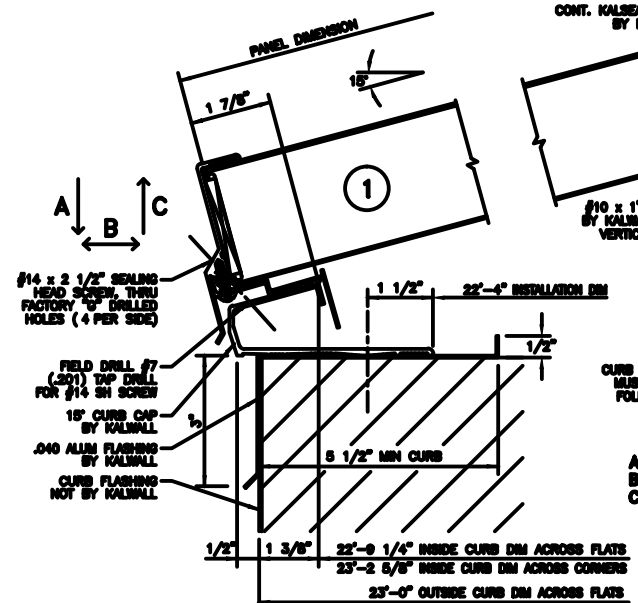
**GEO ROOF PLAN**  
NOTE: SHIPPED IN 16 UNITS



**AA COMPRESSION RING PLAN VIEW**



**INSTALLATION DIMENSIONS FOR LAYOUT OF CURB CAP FOR HALF OF GEO ROOF**



**\*\*FORCES NOTE\*\***  
CURB CONSTRUCTION, NOT BY KALWALL, MUST BE DESIGNED TO RESIST THE FOLLOWING FORCES PRODUCED BY:  
A: PSF LIVE LOAD  
A: PSF WIND LOAD  
A: PSF SNOW LOAD  
A: \_\_\_\_\_ LBS/SIDE  
B: \_\_\_\_\_ LBS/SIDE  
C: \_\_\_\_\_ LBS/SIDE

| CURB TYPE | FASTENER #                      | SPACING  |
|-----------|---------------------------------|----------|
| WOOD      | #14 KAL S.S. - 4" LG.           | 6" O.C.  |
| STEEL     | #14 KAL S.S. - 1" LG.           | 24" O.C. |
| CONCRETE  | 1/4" x 3 1/4" POINT BUD OR #404 | 16" O.C. |

\*NOT SUPPLIED BY KALWALL UNLESS INSTALLED BY KALWALL

**NOTE:**  
INSTALLER TO SET ENTIRE PERIMETER EDGE IN A CONTINUOUS BED OF CAULKING, AND ISOLATE ALUMINUM FROM DISSIMILAR MATERIALS TO PREVENT ELECTROLYSIS.

**KALWALL**<sup>®</sup>  
high performance translucent building systems