

Since 1955

# Kalwall®

Coastline Community College Higher Education Center,  
Garden Grove, CA; TBP Architects



A Photo Gallery of  
Walkways and Canopies

Residence, Highland Village, TX; Barry Sugarman, Architect



Advanced Structural Integrity

Kilmer Middle School, Vienna, VA; Samaha Associates, Architects

# Kalwall®

Since 1955

Kalwall provides the ultimate solution for walkways with shadow and glare-free daylighting. The possibilities are endless when it comes to executing imaginative canopy designs that can form a signature accent to any building. Meanwhile, entire free-standing structures are ideal for linking buildings together or providing weather protection.

Kalwall's superior structural integrity stands up to hurricane-force winds, high snow loads and the most demanding code requirements. In harsh environments such as areas around airports, the self-cleaning nature of Kalwall really shines through! Unlike glass, natural rainfall actually keeps the panels clean and free of unsightly smudges and stains. Maintenance-free, no need for window washing services.

The diffuse properties of Kalwall offer the added benefit of filling an enclosed walkway garage entrance or staircase with balanced daylight, while offering security by protecting occupants being seen from outside the structure.



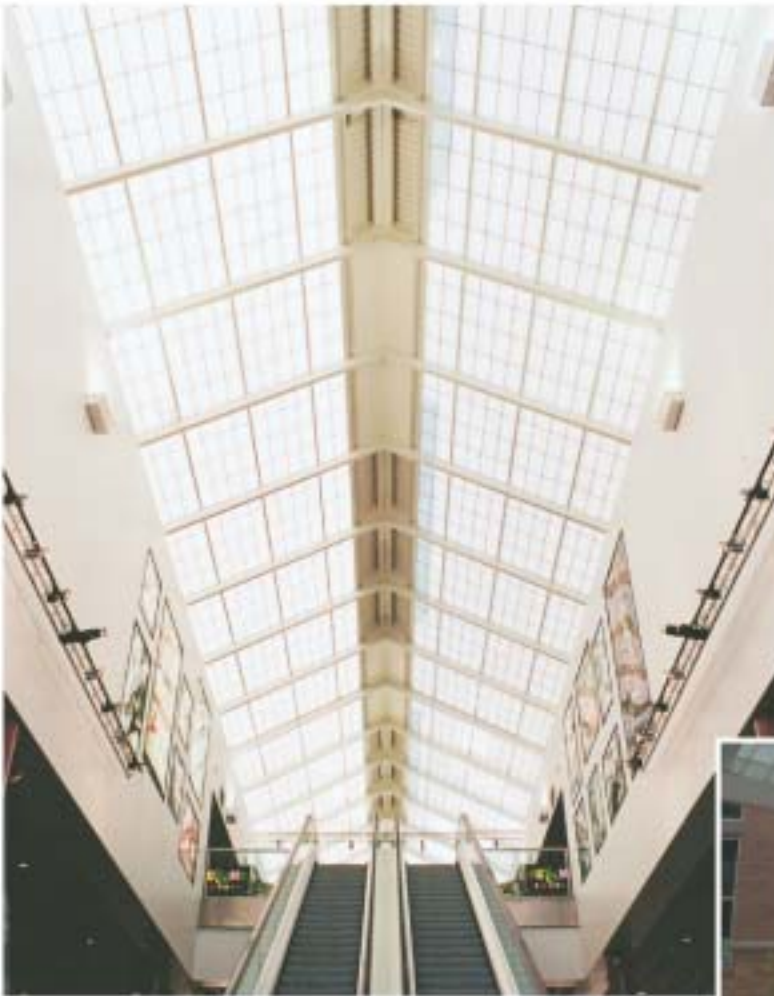
VA Medical Center, Denver, CO  
Carl Wilkey, AIA



Jacksonville Transformation Center, Jacksonville, FL; VRL Architects, Inc.



Mona Stokes High School, Mona Stokes, MI; URS Greiner Architects



Showcase Cinema, Wokingham, England; Abbey Hamon Rouse, Architects & Planners



RTD Civic Center, Denver, CO; Studio Complaniva, Architects



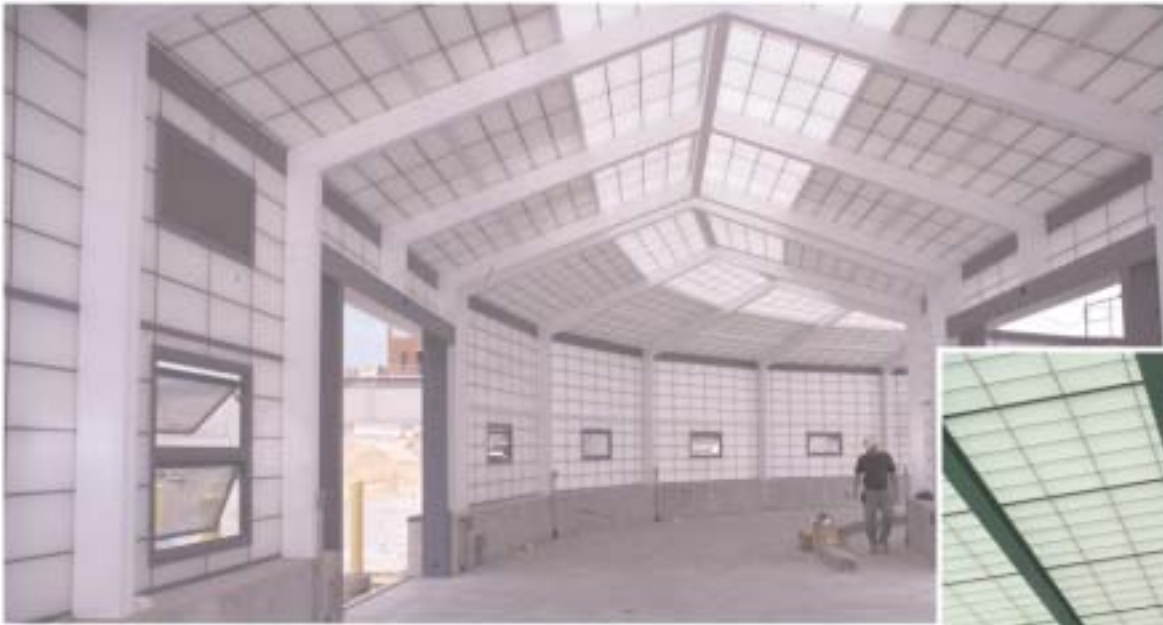
Salt Lake Community College, Salt Lake City, UT; HFS Architects



South Tees General Hospital, Middlesbrough, UK; HLM Architects



McKay Dee Hospital, Ogden, UT; Architectural West Design



Deer Island Waste Water Treatment Plant, Boston, MA



Reno-Tahoe Airport, Reno, NV  
Tate Snyder Kimsey Architects



Concord Hospital M.O.B. South, Concord, NH; JSA Inc., Architects

[www.kalwall.com](http://www.kalwall.com)



PO Box 237, Manchester, NH 03105 Phone 603-627-3861 Fax 603-627-7905  
For immediate assistance, call 1-800-258-9777 (U.S.)  
or email: [info@kalwall.com](mailto:info@kalwall.com)

© 2004 Kalwall Corporation