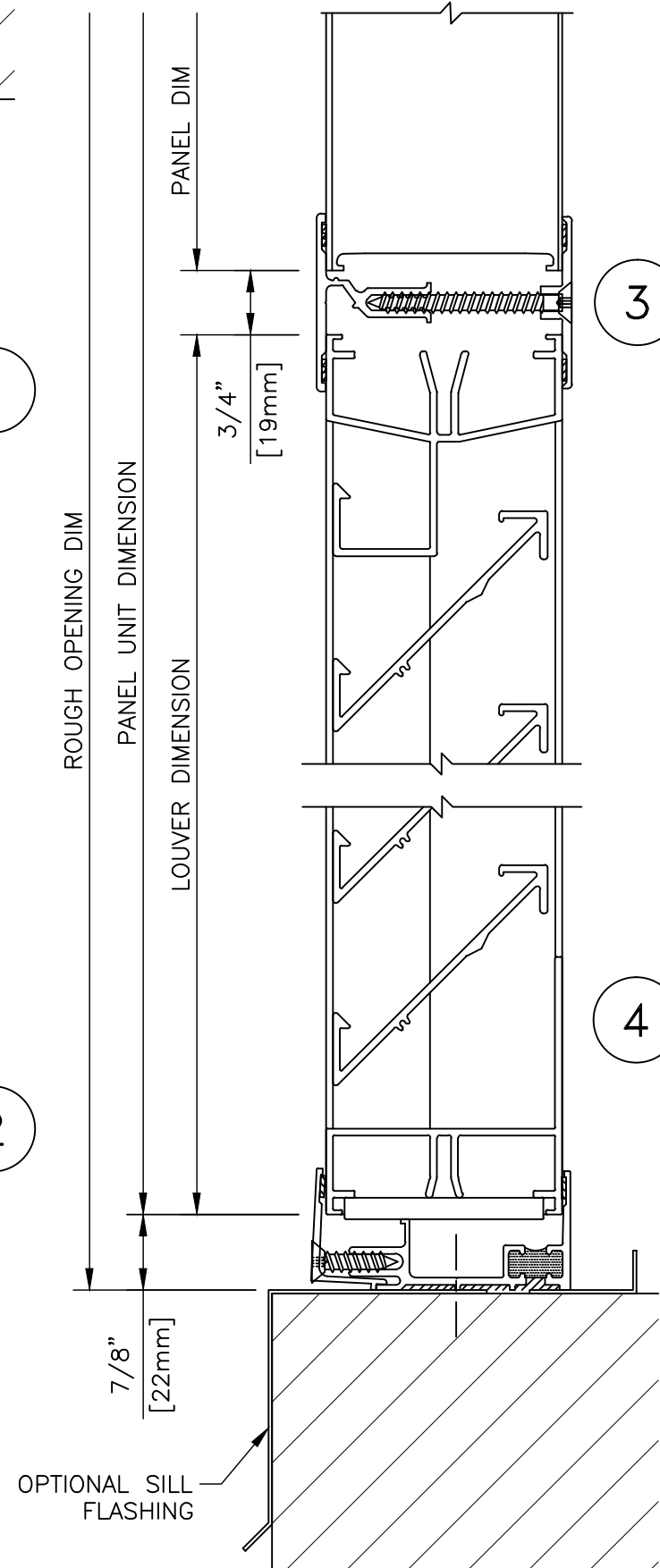
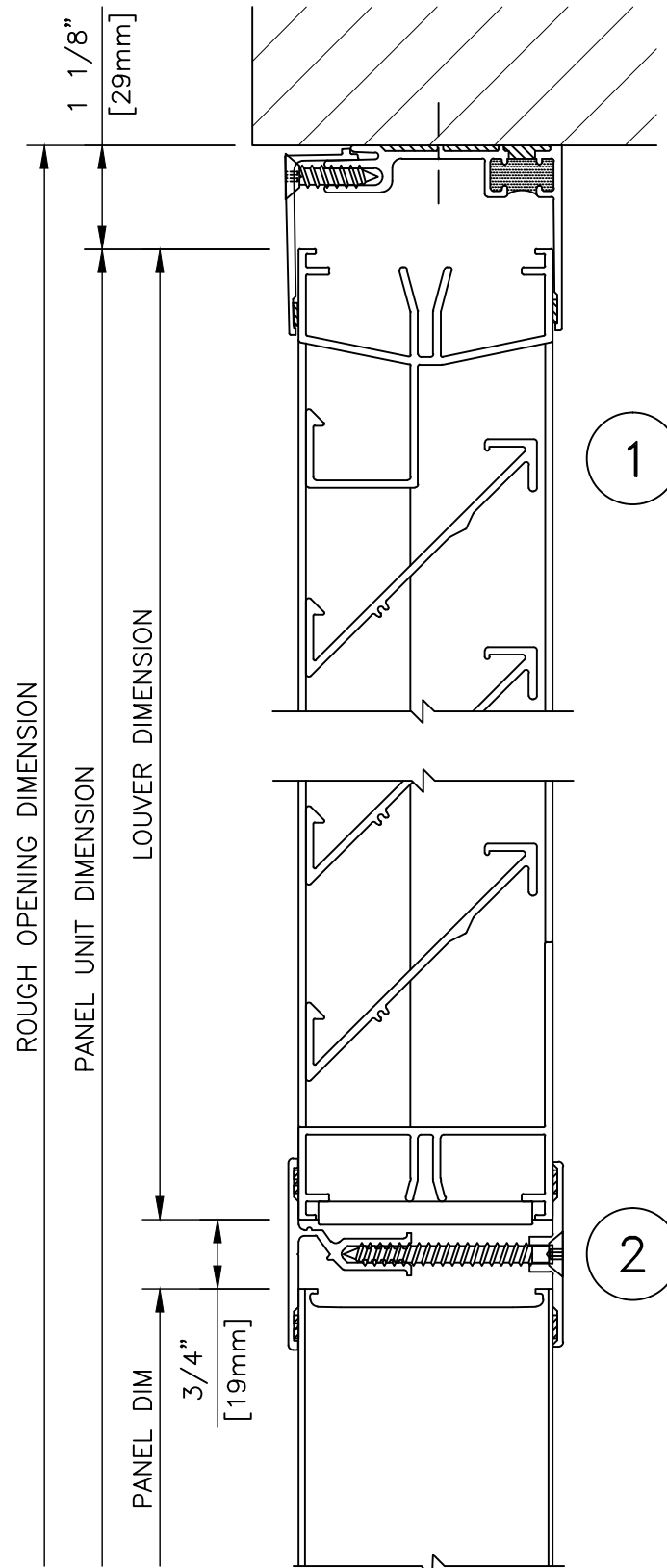
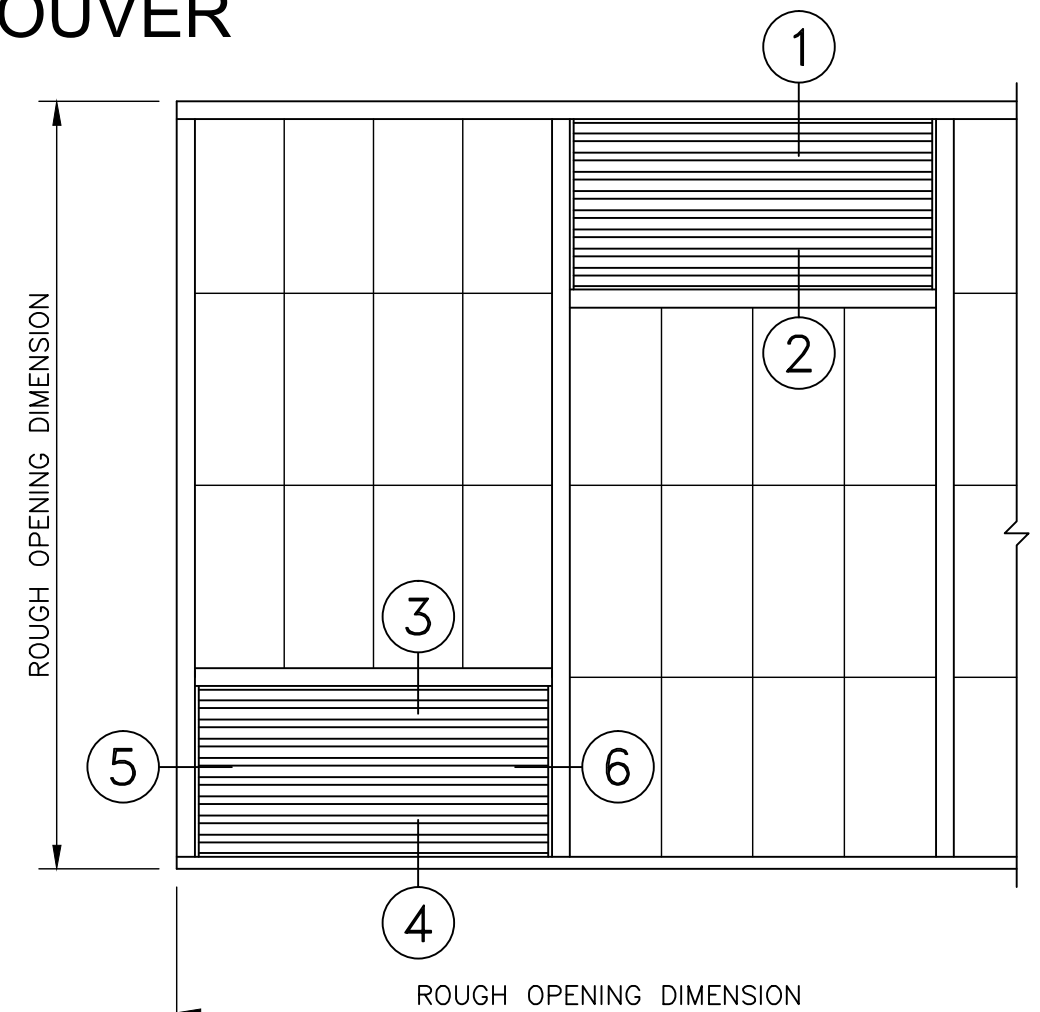


KALWALL 2 3/4" [70mm] DRAINABLE LOUVER



1. SPECIFICATIONS
6063-T6 EXTRUDED ALUM
ALL WELDED CONSTRUCTION
2. FINISH
MILL, KCRF OR ANODIZED
3. SCREENS/BLANK OFF PLATE
(A) BIRD SCREENS
3/4" [19mm] FLAT. EXPANDED
ALUM. .051" [1.3mm THICK]
(B) INSECT SCREENS
18 X 16 ALUMINUM MESH
(C) .063 ALUM BLANK OFF PLATE
4. DIMENSIONS NOTE: RECTANGULAR ONLY
WIDTH: MIN. 10" [254mm]
MAX. 60" [1524mm]
HEIGHT: MIN. 6 1/8" [156mm]
MAX 96" [2438mm]
BLADES SPACING: 2 1/16" [52mm] NOM.
5. FREE AREA
48" [1219mm]W x 48" [1219mm]H 6.38 F [593 m²], 40%
6. BEGINNING POINT OF WATER PENETRATION
1,229.6 f/m (7,845 f³/m) [2391 m/min (34.82 m³/min)]
7. PRESSURE DROP

	H ₂ O	f/min	f ³ /min	m/min	m ³ /min
IN	.612" / 15.54mm	2,000.3	12,762	609.69	361.4
	.051" / 1.29mm	571	3,643	174	103.2
OUT	.439" / 11.15mm	2,000.5	12,763	609.75	361.4
	.051" / 1.29mm	680.2	4,340	207.32	122.9



WALL ELEVATION

