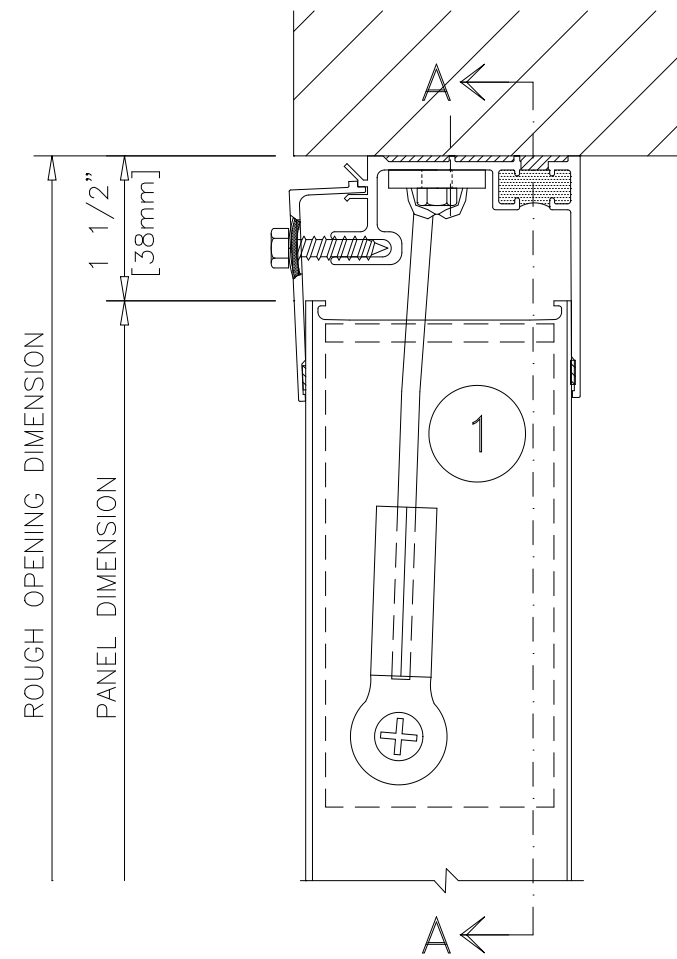
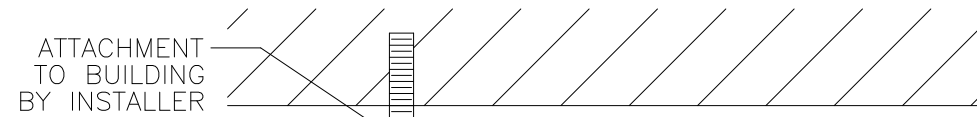


EXPLOSION VENTING THERMAL BREAK



BUILDING SUPPORT AND CONNECTION FOR THE EV CABLE MUST BE DESIGNED TO RESIST 700 LBS TENSILE AND SHEAR FORCE

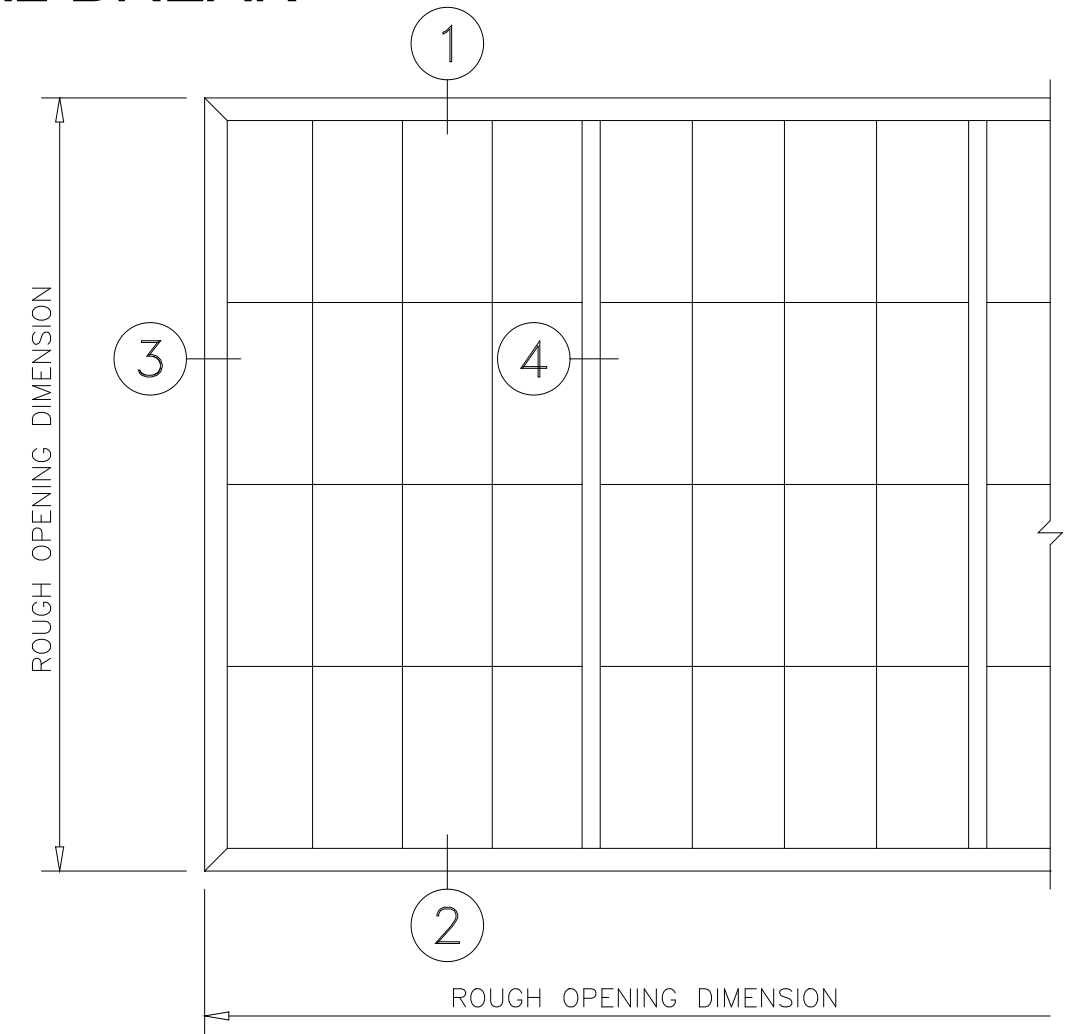


TYPE "C" CABLE

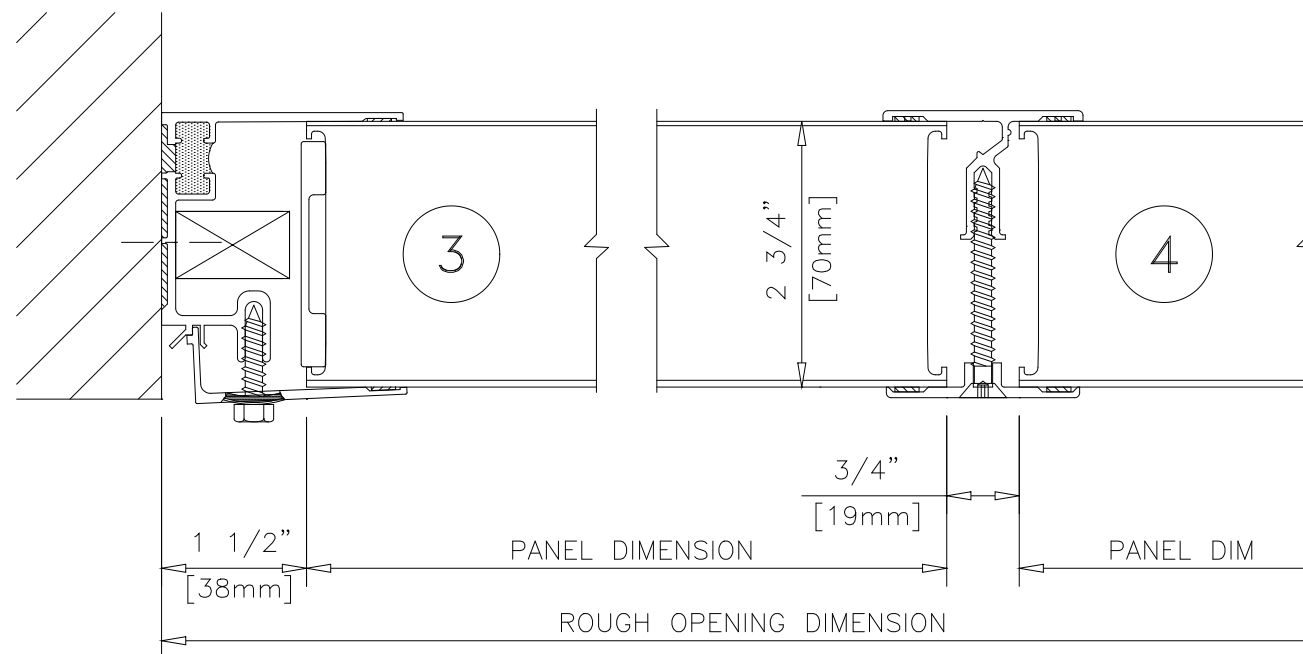
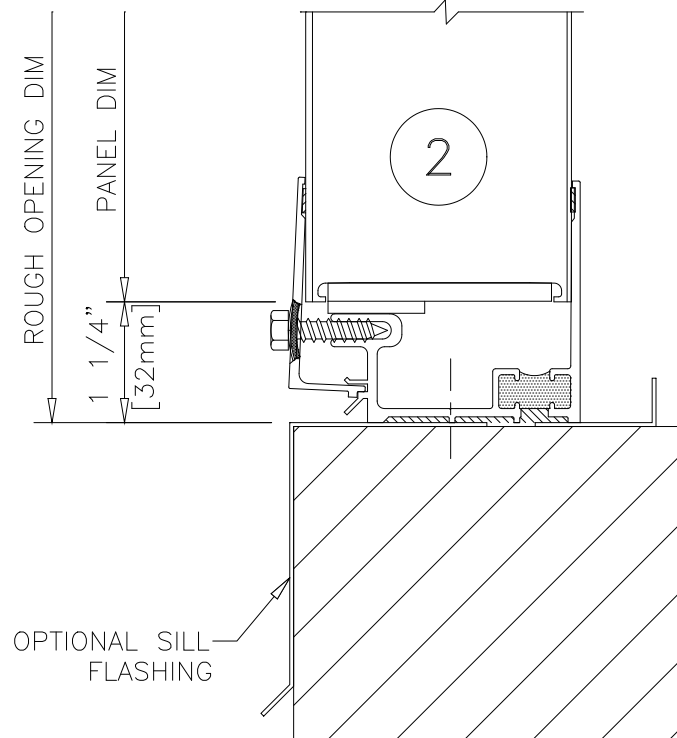
2" X 5" X 3/16" CORNER ANGLE

#14 X 1" R.H. SCREW

SECTION A-A



WALL ELEVATION



NOTE:
IF KALWALL EV SYSTEM IS TO BE SET BACK FROM OUTSIDE FACE OF ROUGH OPENING, A MINIMUM 3/4" (19mm) STANDOFF IS REQUIRED.

NOTE:
MINIMUM EV RELEASE PRESSURE MUST BE DESIGN WIND LOAD PLUS 10 PSF (480Pa)

NOTE:
MINIMUM PANEL AREA 24 Sq Ft (2.2 Sq Meters)

Kalwall SINCE 1955
CORPORATION